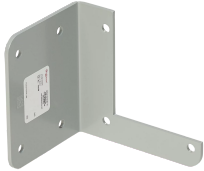


# Hangers



Hangers are used to support a wireway run. The drop hanger is normally attached to an overhead beam or ceiling while the bracket hanger can be used for wall, floor or ceiling installations. Hangers are finished with paint over plated surfaces.

## FEATURES

---

Hangers are used to support a wireway run

The drop hanger is normally attached to an overhead beam or ceiling while the bracket hanger can be used for wall, floor or ceiling installations

Hangers are finished with paint over plated surfaces

## SPECIFICATIONS

**Color Code:** ANSI 61  
**Finish:** Galvanized; Powder Coated  
**Color:** Gray  
**Material:** Mild Steel

Table 1/1

Catalog Number	Article Number	Type	Height	Width	Thickness	Sealing Plate Type
F22HD	14170	Hanger	64mm	64mm	1.9mm	None
F44HD	14380	Hanger	102mm	102mm	1.9mm	None
F66HD	14590	Hanger	152mm	152mm	1.9mm	None
F88HD	14990	Hanger	203mm	203mm	1.9mm	None
F22HB	14180	Hanger	64mm	64mm	1.9mm	
F44HB	14390	Hanger	102mm	102mm	1.9mm	
F66HB	14600	Hanger	152mm	152mm	1.9mm	
F88HB	15000	Hanger	203mm	203mm	1.9mm	

## WARNING

nVent products shall be installed and used only as indicated in nVent's product instruction sheets and training materials. Instruction sheets are available at [www.nvent.com](http://www.nvent.com) and from your nVent customer service representative. Improper installation, misuse, misapplication or other failure to completely follow nVent's instructions and warnings may cause product malfunction, property damage, serious bodily injury and death and/or void your warranty.



Our powerful portfolio of brands:

**CADDY   ERICO   HOFFMAN   ILSCO   SCHROFF   TRACHTE**