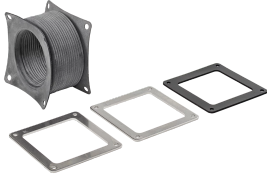


# Flexible Fitting Feed-Through Stainless Steel



Feed-Through Stainless Steel Flexible Fittings are used for isolating a wireway run from shock and vibration or compensating for misalignment. Used where an odd angle is required (but not to exceed 90 degrees). Permits movement of a machine or control station connected to a wireway run. Hypalon bellow with steel flanges. Connects to other wireway sections and fittings and protects wires and cables in frequently hosed down, very wet or highly corrosive applications.

## FEATURES

---

Feed-Through Stainless Steel Flexible Fittings are used for isolating a wireway run from shock and vibration or compensating for misalignment

Used where an odd angle is required (but not to exceed 90 degrees)

Permits movement of a machine or control station connected to a wireway run

Hypalon bellow with steel flanges

Connects to other wireway sections and fittings and protects wires and cables in frequently hosed down, very wet or highly corrosive applications

SPECIFICATIONS

**Material:** Hypalon Rubber Bellow  
**Finish:** Textured

Table 1/1					
Catalog Number	Article Number	Type	Height	Width	Quick Ship
F44WFFSS	16020	Flexible Fitting	102mm	102mm	No
F66WFFSS	16050	Flexible Fitting	152mm	152mm	No

ADDITIONAL PRODUCT DETAILS

All dimensions are to outside surfaces. Allow .12 in. (3 mm) additional for gasket at joints.

WARNING

nVent products shall be installed and used only as indicated in nVent's product instruction sheets and training materials. Instruction sheets are available at [www.nvent.com](http://www.nvent.com) and from your nVent customer service representative. Improper installation, misuse, misapplication or other failure to completely follow nVent's instructions and warnings may cause product malfunction, property damage, serious bodily injury and death and/or void your warranty.



Our powerful portfolio of brands:

CADDY   ERICO   HOFFMAN   ILSCO   SCHROFF   TRACHTE