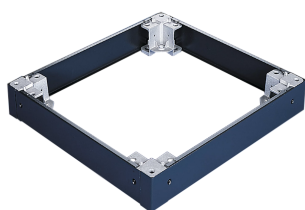


ProLine 100-mm Plinth Base, fits 400x600mm, Black, Steel

CATALOG NUMBER

PPB146



Plinth Bases install under an enclosure to provide space for cables to enter from below. A Plinth Base consists of four corner supports connected to four access panels. The corner supports are cast aluminum. The access panels attach to the corner supports with screws. All necessary mounting hardware included. Order a gland plate system to provide Type 12 protection when using a Plinth Base.

FEATURES

All necessary mounting hardware included

Order with a gland plate system to provide Type 12 protection when using a Plinth Base

PRODUCT ATTRIBUTES

Article Number: 25589

Material: Mild Steel

Fits Frame: 400 x 600mm

Color: Jet Black

Color Code: RAL 9005

Finish: Powder Coated

Thickness: 1.52mm

WARNING

nVent products shall be installed and used only as indicated in nVent's product instruction sheets and training materials. Instruction sheets are available at www.nvent.com and from your nVent customer service representative. Improper installation, misuse, misapplication or other failure to completely follow nVent's instructions and warnings may cause product malfunction, property damage, serious bodily injury and death and/or void your warranty.



Our powerful portfolio of brands:

CADDY ERICO HOFFMAN ILSCO SCHROFF TRACHTE