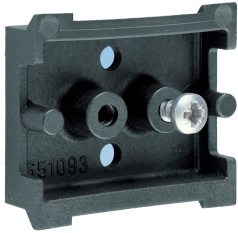


# DIN 3 Rail with Self-Adhesive



DIN 3 Rail with Self-Adhesive is designed to directly mount small DIN rail mountable components or use as DIN 3 rail holder. Use in tight spaces where installation of a DIN rail is not possible. Industrial grade adhesive is used to avoid hole drilling with fast installation. Each unit can hold up to 1.1 lbs. (500g) in weight. Fasteners may be used for increased load rating. DIN 3 Rail with Self-adhesive can only be mounted on smooth surfaces, e.g. metals, lacquered surfaces and plastics (except polyethylene, polypropylene and rubber). The surfaces must be dry and free from dust, oil, separating agents and other contamination.

## INDUSTRY STANDARDS

Material conforms to UL 94V-0

## FEATURES

DIN 3-style, symmetrical

Constructed from UL 94V-0 rated black plastic

Each unit can hold 1.1 lbs. (500g) after a 24-hour waiting period

Mounting self-adhesive (non-aging, high-performance adhesive strip)

Optional screw mount; five 10-32/M5 screws are provided

Hole pattern 0.5 in. (12.8 mm) distance, Ø 0.14 in. (3.6mm)

Five self-adhesive DIN rails per kit

Operating / Storage temperature -49 F to +158 F (-45 C to 70 C)

SPECIFICATIONS

Table 1/1						
Catalog Number	Article Number	Material	Finish	Color	Load Rating	Quick Ship
ADIN3PA42	26092	Composite	Smooth Matte	Black	500g	No

WARNING

nVent products shall be installed and used only as indicated in nVent's product instruction sheets and training materials. Instruction sheets are available at [www.nvent.com](http://www.nvent.com) and from your nVent customer service representative. Improper installation, misuse, misapplication or other failure to completely follow nVent's instructions and warnings may cause product malfunction, property damage, serious bodily injury and death and/or void your warranty.



Our powerful portfolio of brands:

CADDY   ERICO   HOFFMAN   ILSCO   SCHROFF   TRACHTE