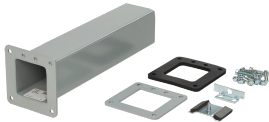


Cutoff Fitting Non-Lay-In Lay-In Hinged Cover



Non-Lay-In Hinged Cover Cutoff Fittings are used for lengths up to 12.00 inch (305 mm). Body comes in two pieces. Shorten body and cover to the desired length and weld together. Shorten body to desired length and weld on flange. This is not a "lay-in" fitting but often is used when entering an enclosure. Fittings are finished with paint over plated surfaces.

FEATURES

Non-Lay-In Hinged Cover Cutoff Fittings are used for lengths up to 12.00 inch (305 mm)

Body comes in two pieces. Shorten body and cover to the desired length and weld together

Shorten body to desired length and weld on flange

"This is not a "lay-in" fitting but often is used when entering an enclosure"

Fittings are finished with paint over plated surfaces

SPECIFICATIONS

- Color Code:

ANSI 61
- Finish:

Galvanized; Powder Coated
- Color:

Gray
- Material:

Mild Steel

Table 1/1						
Catalog Number	Article Number	Type	Height	Width	Thickness	Sealing Plate Type
F126LX	18790	Cut-Off Fitting	305mm	152mm	1.9mm	90°
F22LX	18080	Cut-Off Fitting	64mm	64mm	1.9mm	90°
F44LX	18310	Cut-Off Fitting	102mm	102mm	1.9mm	90°
F66LX	18550	Cut-Off Fitting	152mm	152mm	1.9mm	90°
F88LX	19330	Cut-Off Fitting	203mm	203mm	1.9mm	90°

ADDITIONAL PRODUCT DETAILS

Each sealing plate also includes one gasket and one set of screws to join sections.

WARNING

nVent products shall be installed and used only as indicated in nVent's product instruction sheets and training materials. Instruction sheets are available at www.nvent.com and from your nVent customer service representative. Improper installation, misuse, misapplication or other failure to completely follow nVent's instructions and warnings may cause product malfunction, property damage, serious bodily injury and death and/or void your warranty.



Our powerful portfolio of brands:

CADDY ERICO HOFFMAN ILSCO SCHROFF TRACHTE