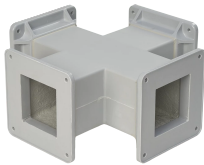


# Cross Feed-Through Fiberglass



Feed-Through Fiberglass Crosses are used for routing wires and cables in four directions. Connects to other wireway sections and fittings and protects wires and cables in corrosive or dirty indoor or outdoor applications.

## FEATURES

---

Feed-Through Fiberglass Crosses are used for routing wires and cables in four directions

Connects to other wireway sections and fittings and protects wires and cables in corrosive or dirty indoor or outdoor applications

SPECIFICATIONS

**Color Code:** ANSI 61  
**Material:** Fiberglass  
**Color:** Gray  
**Finish:** Smooth Matte

Table 1/1						
Catalog Number	Article Number	Type	Height	Width	Thickness	Quick Ship
F44WCFG	15900	Cross Fitting	102mm	102mm	3.2mm	No
F66WCFG	19050	Cross Fitting	152mm	152mm	3.2mm	No

WARNING

nVent products shall be installed and used only as indicated in nVent's product instruction sheets and training materials. Instruction sheets are available at [www.nvent.com](http://www.nvent.com) and from your nVent customer service representative. Improper installation, misuse, misapplication or other failure to completely follow nVent's instructions and warnings may cause product malfunction, property damage, serious bodily injury and death and/or void your warranty.



Our powerful portfolio of brands:

CADDY   ERICO   HOFFMAN   ILSCO   SCHROFF   TRACHTE