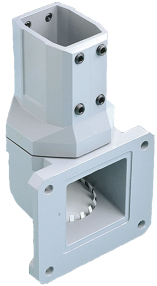


## Compact Series 2 Vertical Wall Joint



Compact Series 2 Vertical Wall Joint mounts the suspension system to a vertical surface, allowing the tube to extend vertically. Arm can be rotated or turned 300 degrees. Includes access plates for easy wire installation.

### FEATURES

---

Set screws and gasket are included

Surface mounting fasteners are not provided

Assembled Compact Series 2 HMI Arm System has a max weight load of 101 lb. (45.8 kg)

SPECIFICATIONS

Table 1/1						
Catalog Number	Article Number	Height	Width	Material	Finish	Color
CCS2WJVLG	41809	45mm	60mm	Aluminum	Powder Coated	Light Gray

WARNING

nVent products shall be installed and used only as indicated in nVent's product instruction sheets and training materials. Instruction sheets are available at [www.nvent.com](http://www.nvent.com) and from your nVent customer service representative. Improper installation, misuse, misapplication or other failure to completely follow nVent's instructions and warnings may cause product malfunction, property damage, serious bodily injury and death and/or void your warranty.



Our powerful portfolio of brands:

CADDY   ERICO   HOFFMAN   ILSCO   SCHROFF   TRACHTE