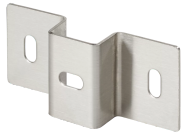


CleanTray Hanger Bracket



Clean Tray Hanger Brackets are used for supporting a Clean Tray run. The Clean Tray stainless steel system is designed to protect rated cabling in applications that require frequent washdown.

FEATURES

Clean Tray Hanger Brackets are used for supporting a Clean Tray run

The Clean Tray stainless steel system is designed to protect rated cabling in applications that require frequent washdown

SPECIFICATIONS

Finish: Brushed #3
Material: Stainless Steel 304

Table 1/1						
Catalog Number	Article Number	Type	Height	Width	Thickness	Quick Ship
CT33HB	17157	Bracket	76mm	76mm	1.27mm	No
CT44HB	17165	Bracket	102mm	102mm	1.27mm	No
CT66HB	17162	Bracket	152mm	152mm	1.27mm	No
CT22HB	17153	Bracket	51mm	51mm	1.27mm	No

WARNING

nVent products shall be installed and used only as indicated in nVent's product instruction sheets and training materials. Instruction sheets are available at www.nvent.com and from your nVent customer service representative. Improper installation, misuse, misapplication or other failure to completely follow nVent's instructions and warnings may cause product malfunction, property damage, serious bodily injury and death and/or void your warranty.



Our powerful portfolio of brands:

CADDY ERICO HOFFMAN ILSCO SCHROFF TRACHTE