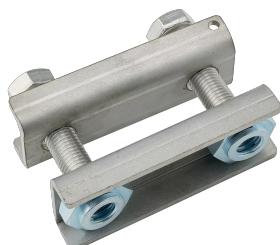


# nVent ERIFLEX Flexbus HCBC Clamp



## CERTIFICATIONS



## FEATURES

Rigid design assures even contact pressure

Installs quickly and easily

Ideal for on-site modifications

Made with non-magnetic material stainless steel for high-current connections to prevent the formation of magnetic fields

Contains crimped self-locking nut for vibration resistance and easy installation

No drilling needed to fix the Flexbus Conductor on the transformer/power supply palm

Includes voltage detection connecting point

RoHS compliant

## SPECIFICATIONS

**Material:** Stainless Steel 304 (EN 1.4301)

Table 1/2

Catalog Number	Article Number	A	B	C	D	Thickness (T)
----------------	----------------	---	---	---	---	---------------

FLEXCLAMP100	508192	100 mm	160 mm	20 mm	43 mm	4 mm
FLEXCLAMP120	508193	120 mm	180 mm	20 mm	43 mm	4 mm
FLEXCLAMP160	508194	160 mm	220 mm	20 mm	43 mm	4 mm
FLEXCLAMP63	508190	63 mm	123 mm	20 mm	43 mm	4 mm
FLEXCLAMP80	508191	80 mm	140 mm	20 mm	43 mm	4 mm

Table 2/2

Catalog Number	Article Number	Hole Size (HS)	Torque (TQ)	Unit Weight	Conductor Width
FLEXCLAMP100	508192	5.5 mm	100 N·m	0.92 kg	90 - 100 mm
FLEXCLAMP120	508193	5.5 mm	100 N·m	1 kg	110 - 120 mm
FLEXCLAMP160	508194	5.5 mm	100 N·m	1.32 kg	130 - 160 mm
FLEXCLAMP63	508190	5.5 mm	100 N·m	0.53 kg	30 - 63 mm
FLEXCLAMP80	508191	5.5 mm	100 N·m	0.84 kg	70 - 80 mm

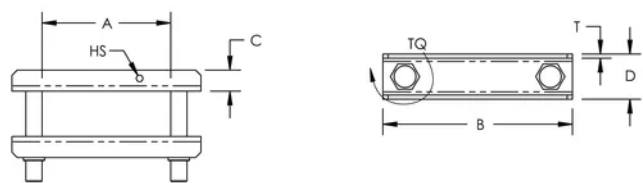
## ADDITIONAL PRODUCT DETAILS

It is mandatory to use the HCBC Clamp associated with the HCBC Plate for proper Flexbus Conductor connection.

The minimum clearance distance is 14mm according to IEC 61439-1 with air pollution degree 3. If this distance cannot be respected, insulation material should be added between the metallic LV cover and the HCBC clamp. Flexbus IP2x Boots is also a solution.

If the Flexbus Conductors have a horizontal entry, an extender needs to be added between the power supply palm and HCBC Clamp and Plate.

DIAGRAMS



WARNING

nVent products shall be installed and used only as indicated in nVent's product instruction sheets and training materials. Instruction sheets are available at [www.nvent.com](http://www.nvent.com) and from your nVent customer service representative. Improper installation, misuse, misapplication or other failure to completely follow nVent's instructions and warnings may cause product malfunction, property damage, serious bodily injury and death and/or void your warranty.

North America

+1.800.753.9221  
Option 1 – Customer Care  
Option 2 – Technical  
Support

Europe

Netherlands:  
+31 800-0200135  
France:  
+33 800 901 793

Europe

Germany:  
800 1890272  
Other Countries:  
+31 13 5835404

APAC

Shanghai:  
+ 86 21 2412 1618/19  
Sydney:  
+61 2 9751 8500



Our powerful portfolio of brands:

CADDY   ERICO   HOFFMAN   ILSCO   SCHROFF   TRACHTE