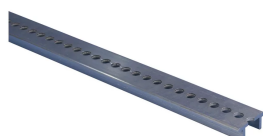


nVent ERIFLEX Flexbus Aluminum Perforated Profile



CERTIFICATIONS



FEATURES

Optional brackets are available

Factory-punched head holes for quick assembly

RoHS compliant

SPECIFICATIONS

Table 1/2

Catalog Number	Article Number	Material	A	Hole Size (HS)	Height (H)	Length (L)
FLEXALPROF2 M	508100	Aluminum	12.5 mm	8 mm	15 mm	2000mm

Table 2/2

Catalog Number	Article Number	Width (W)	Unit Weight
----------------	----------------	-----------	-------------

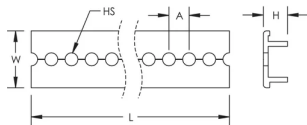
FLEXALPROF2M	508100	35 mm	0.9 kg
--------------	--------	-------	--------

ADDITIONAL PRODUCT DETAILS

Support kit and aluminum profile are sold separately.

When cable tray is used, we recommend installing a Flexbus Support at each extremity, in order to protect the Flexbus Conductor against potential sharp edges of the cable tray.

DIAGRAMS



WARNING

nVent products shall be installed and used only as indicated in nVent's product instruction sheets and training materials. Instruction sheets are available at www.nvent.com and from your nVent customer service representative. Improper installation, misuse, misapplication or other failure to completely follow nVent's instructions and warnings may cause product malfunction, property damage, serious bodily injury and death and/or void your warranty.

North America

+1.800.753.9221
Option 1 – Customer Care
Option 2 – Technical
Support

Europe

Netherlands:
+31 800-0200135
France:
+33 800 901 793

Europe

Germany:
800 1890272
Other Countries:
+31 13 5835404

APAC

Shanghai:
+ 86 21 2412 1618/19
Sydney:
+61 2 9751 8500



Our powerful portfolio of brands:

CADDY ERICO HOFFMAN ILSCO SCHROFF TRACHTE