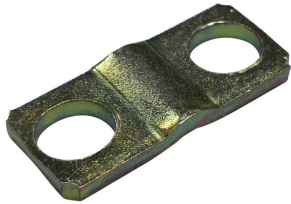


# EB-142 Main Terminal Clamp



## CERTIFICATIONS



## FEATURES

Quick and easy installation

RoHS compliant

## SPECIFICATIONS

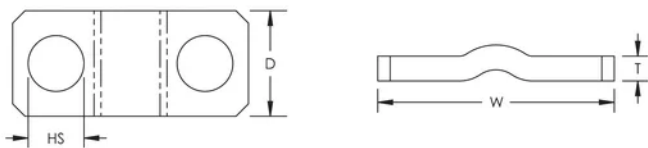
Table 1/2

Catalog Number	Article Number	Material	Finish	Conductor Size, IEC	Hole Size (HS)	Depth (D)
EB142CON35	568672	Steel	Electrogalvanized	6 - 35 mm <sup>2</sup> Stranded	5.5 mm	9 1/2mm

Table 2/2

Catalog Number	Article Number	Width (W)	Thickness (T)	Torque (TQ)	Unit Weight
EB142CON35	568672	22 mm	2 mm	2 N·m	0 kg

DIAGRAMS



WARNING

nVent products shall be installed and used only as indicated in nVent's product instruction sheets and training materials. Instruction sheets are available at [www.nvent.com](http://www.nvent.com) and from your nVent customer service representative. Improper installation, misuse, misapplication or other failure to completely follow nVent's instructions and warnings may cause product malfunction, property damage, serious bodily injury and death and/or void your warranty.

North America

+1.800.753.9221  
Option 1 – Customer Care  
Option 2 – Technical  
Support

Europe

Netherlands:  
+31 800-0200135  
France:  
+33 800 901 793

Europe

Germany:  
800 1890272  
Other Countries:  
+31 13 5835404

APAC

Shanghai:  
+ 86 21 2412 1618/19  
Sydney:  
+61 2 9751 8500



Our powerful portfolio of brands:

CADDY   ERICO   HOFFMAN   ILSCO   SCHROFF   TRACHTE