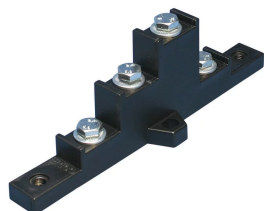


BS-250A Four Pole Insulating Support



CERTIFICATIONS



FEATURES

Create custom four pole distribution blocks for an electrical distribution system

Mounts with screws

Protection screen can be fixed using spacers

Halogen free

RoHS compliant

SPECIFICATIONS

Table 1/3

| Catalog Number | Article Number | Material | Finish | Max Working Voltage, IEC (Ui) | Working Temperature | Typical Application Current Rating |
|----------------|----------------|---|-------------------|-------------------------------|---------------------|------------------------------------|
| BS-250A | 551300 | Steel, Glass Fibre Reinforced Polyamide | Electrogalvanized | 630, 630 | -40 to 130 °C | 160 - 250 A |

Table 2/3

| Catalog Number | Article Number | Complies With | Flammability Rating | Busbar Width | Busbar Thickness | Depth (D) |
|----------------|----------------|---|---------------------|--------------|------------------|-----------|
| BS-250A | 551300 | IEC® 60439.1, IEC® 61439.1, IEC® 60695-2-11 (Glow Wire Test 960 °C) | UL® 94V-0 | 15 - 20 mm | 5 mm | 45mm |

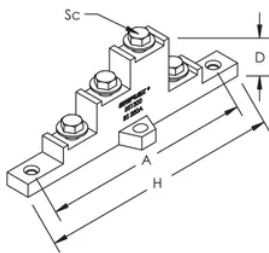
Table 3/3

| Catalog Number | Article Number | Height (H) | A | Screw Diameter (Sc) | Unit Weight |
|----------------|----------------|------------|--------|---------------------|-------------|
| BS-250A | 551300 | 150 mm | 130 mm | 6 | 0.05 kg |

ADDITIONAL PRODUCT DETAILS

Must be used with copper busbars.

DIAGRAMS



WARNING

nVent products shall be installed and used only as indicated in nVent's product instruction sheets and training materials. Instruction sheets are available at www.nvent.com and from your nVent customer service representative. Improper installation, misuse, misapplication or other failure to completely follow nVent's instructions and warnings may cause product malfunction, property damage, serious bodily injury and death and/or void your warranty.

North America

+1.800.753.9221

Option 1 – Customer Care

Option 2 – Technical

Support

Europe

Netherlands:

+31 800-0200135

France:

+33 800 901 793

Europe

Germany:

800 1890272

Other Countries:

+31 13 5835404

APAC

Shanghai:

+ 86 21 2412 1618/19

Sydney:

+61 2 9751 8500



Our powerful portfolio of brands:

CADDY

ERICO

HOFFMAN

ILSCO

SCHROFF

TRACHTE