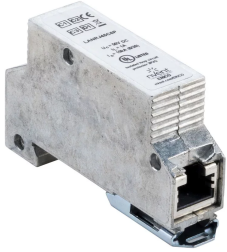


# LAN Surge Protector



## CERTIFICATIONS



## FEATURES

Rugged, metallic enclosure provides both environmental and electrical shielding

Up to CAT6 and POE (Power Over Ethernet) protection in one product

Simple, bi-directional installation

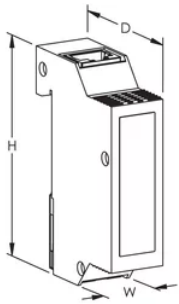
## SPECIFICATIONS

Catalog Number	LANRJ45C6P
Nominal System Voltage (Un)	48 VDC
Max Continuous Operating Voltage (Uc)	50 VDC 72 VDC
Voltage Protection Rating (VPR), L-L	150V
Voltage Protection Rating (VPR), L-PE	550V
Nominal Discharge Current (In), L-L	150kA 8/20 $\mu$ s
C2 Total Nominal Discharge Current (In), L-PE	10kA 8/20 $\mu$ s
Max Discharge Current (Imax), L-PE	10kA 8/20 $\mu$ s
Impulse Current (Iimp)	1kA 10/350 $\mu$ s

<b>Catalog Number</b>	<b>LANRJ45C6P</b>
Rated Load Current (IL)	1A
Frequency	250 MHz Max
Mounting	35 mm top hat DIN rail
Temperature	-40 to 80 °C
Connection Type	RJ45
Enclosure Material	Zinc Alloy
Enclosure Rating	IP 20
Depth (D)	45.5mm
Height (H)	75 mm
Width (W)	19 mm
Complies With	IEC® 61643-21

## DIAGRAMS

---



## WARNING

---

nVent products shall be installed and used only as indicated in nVent's product instruction sheets and training materials. Instruction sheets are available at [www.nvent.com](http://www.nvent.com) and from your nVent customer service representative. Improper installation, misuse, misapplication or other failure to completely follow nVent's instructions and warnings may cause product malfunction, property damage, serious bodily injury and death and/or void your warranty.

**North America**

+1.800.753.9221

Option 1 – Customer Care

Option 2 – Technical

Support

**Europe**

Netherlands:

+31 800-0200135

France:

+33 800 901 793

**Europe**

Germany:

800 1890272

Other Countries:

+31 13 5835404

**APAC**

Shanghai:

+ 86 21 2412 1618/19

Sydney:

+61 2 9751 8500



Our powerful portfolio of brands:

**CADDY**

**ERICO**

**HOFFMAN**

**ILSCO**

**SCHROFF**

**TRACHTE**