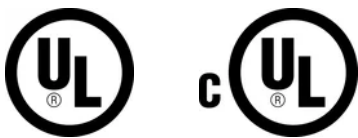


nVent CADDY Speed Link SLK with Y-Toggle



CERTIFICATIONS



FEATURES

Complete system includes wire, locking device and two pre-assembled toggle end fittings

Attaches to clearance holes in a variety of structures or hanging devices

Ideal for supporting lighting fixtures

SPECIFICATIONS

Static Load Safety Factor:	5:1
Finish:	Electrogalvanized
Material:	Steel;Zinc Alloy;Polypropylene
Complies With:	SMACNA HVAC-DCS

Table 1/2

Catalog Number	Article Number	Wire Rope Diameter	Wire Rope Length	Wire Rope "Y" Length (YL)	A	B
SLK15Y500L3	196528	1.5 mm	3m	0.5m	39 mm	5 mm
SLK15Y300L3	196527	1.5 mm	3m	0.3m	39 mm	5 mm

CatalogNumber	Article Number	Wire Rope Diameter	Wire Rope Length	Wire Rope "Y" Length (YL)	A	B
SLK15Y500L3R 2	196655	1.5 mm	3m	0.5m	39 mm	5 mm
SLK15Y300L5		1.5 mm	5m	0.3m	39 mm	5 mm
SLK15Y300L3R 2	196648	1.5 mm	3m	0.3m	39 mm	5 mm
SLK2Y300L7	196556	2 mm	7m	0.3m	42 mm	8 mm
SLK2Y300L3	196553	2 mm	3m	0.3m	42 mm	8 mm
SLK2Y300L5	196555	2 mm	5m	0.3m	42 mm	8 mm
SLK2Y300L10	196557	2 mm	10m	0.3m	42 mm	8 mm
SLK2Y300L2	196552	2 mm	2m	0.3m	42 mm	8 mm
SLK2Y300L3R2	196638	2 mm	3m	0.3m	42 mm	8 mm
SLK2Y500L3	196554	2 mm	3m	0.5m	42 mm	8 mm

Table 2/2

Catalog Number	Article Number	Static Load
SLK15Y500L3	196528	195N
SLK15Y300L3	196527	195N
SLK15Y500L3R2	196655	195N
SLK15Y300L5		195N
SLK15Y300L3R2	196648	195N
SLK2Y300L7	196556	440N

Catalog Number	Article Number	Static Load
SLK2Y300L3	196553	440N
SLK2Y300L5	196555	440N
SLK2Y300L10	196557	440N
SLK2Y300L2	196552	440N
SLK2Y300L3R2	196638	440N
SLK2Y500L3	196554	440N

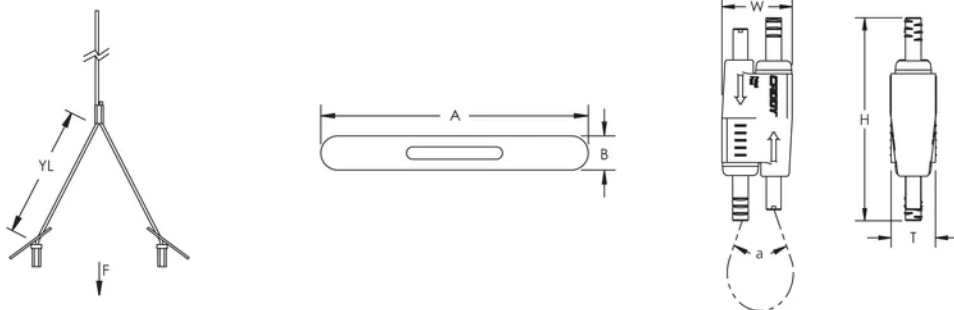
Thickness (T): 12.5 mm

Width (W): 19 mm

Height (H): 55 mm

Angle (a): 90 ° Max

DIAGRAMS



WARNING

nVent products shall be installed and used only as indicated in nVent's product instruction sheets and training materials. Instruction sheets are available at www.nvent.com and from your nVent customer service representative. Improper installation, misuse, misapplication or other failure to completely follow nVent's instructions and warnings may cause product malfunction, property damage, serious bodily injury and death and/or void your warranty.

North America

+1.800.753.9221

Option 1 – Customer Care

Option 2 – Technical

Support

Europe

Netherlands:

+31 800-0200135

France:

+33 800 901 793

Europe

Germany:

800 1890272

Other Countries:

+31 13 5835404

APAC

Shanghai:

+ 86 21 2412 1618/19

Sydney:

+61 2 9751 8500



Our powerful portfolio of brands:

CADDY

ERICO

HOFFMAN

ILSCO

SCHROFF

TRACHTE

