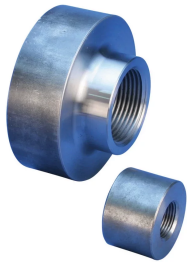


D16 Mechanical Anchor, Plain, Worldwide Design



CERTIFICATIONS



FEATURES

Replaces conventional hooked reinforcing bar

Simplifies reinforcing bar placement and lowers placing costs

Head area exceeds 5x bar area (net 4x)

SPECIFICATIONS

Finish: Plain
Material: Steel
Design Version: Worldwide (Globally Available Materials)

Table 1/2

Catalog Number	Rebar Size, Metric	Rebar Size, US	Rebar Size, Canada	Diameter 1 (Ø1)	Diameter 2 (Ø2)	Length 1 (L1)
EL12D16N	12 mm	#4	10M	35 mm		19 mm

CatalogNumber	Rebar Size, Metric	Rebar Size, US	Rebar Size, Canada	Diameter 1(Ø1)	Diameter 2(Ø2)	Length 1 (L1)
EL10D16N	10 mm	#3		35 mm		18 mm
EL14D16N	14 mm			35 mm		22 mm
EL16D16N	16 mm	#5	15M	36 mm		24 mm
EL18D16N	18 mm			45 mm		30 mm
EL20D16N	20 mm	#6	20M	45 mm		35 mm
EL22D16N	22 mm	#7		50 mm		38 mm
EL25D16N	25 mm	#8	25M	60 mm		40 mm
EL28D16N	28 mm	#9	30M	65 mm		42 mm
EL36D16N	36 mm	#11	35M	85 mm	80 mm	52 mm
EL38D16N	38 mm	#12		85 mm	80 mm	54 mm
EL40D16WN	40 mm			80 mm	90 mm	57 mm
EL32D16N	32 mm	#10		75 mm		46 mm
EL30D16N	30 mm			70 mm		52 mm
EL50TD16WN	50 mm			80 mm	115 mm	70 mm
EL34D16N	34 mm			80 mm		56 mm

Table 2/2

Catalog Number	Length 2 (L2)	Unit Weight	Certifications
EL12D16N		0.12 kg	nVent LENTON EPD - Product Specific, RISE, CARES
EL10D16N		0.13 kg	nVent LENTON EPD - Product Specific

Catalog Number	Length 2 (L2)	Unit Weight	Certifications
EL14D16N		0.14 kg	nVent LENTON EPD - Product Specific, RISE, CARES
EL16D16N		0.16 kg	CARES, nVent LENTON EPD - Product Specific, RISE
EL18D16N		0.32 kg	nVent LENTON EPD - Product Specific
EL20D16N		0.37 kg	nVent LENTON EPD - Product Specific, RISE, CARES
EL22D16N		0.49 kg	nVent LENTON EPD - Product Specific
EL25D16N		0.76 kg	CARES, RISE, nVent LENTON EPD - Product Specific
EL28D16N		0.92 kg	nVent LENTON EPD - Product Specific
EL36D16N	25 mm	1.86 kg	nVent LENTON EPD - Product Specific
EL38D16N	25 mm	1.87 kg	nVent LENTON EPD - Product Specific
EL40D16WN	32 mm	2.11 kg	CARES, nVent LENTON EPD - Product Specific
EL32D16N		1.33 kg	CARES, nVent LENTON EPD - Product Specific, RISE
EL30D16N		1.34 kg	nVent LENTON EPD - Product Specific
EL50TD16WN	45 mm	3.69 kg	CARES, nVent LENTON EPD - Product Specific
EL34D16N		1.86 kg	nVent LENTON EPD - Product Specific

Designed to Meet: ACI 318;AS3600;ASTM A970

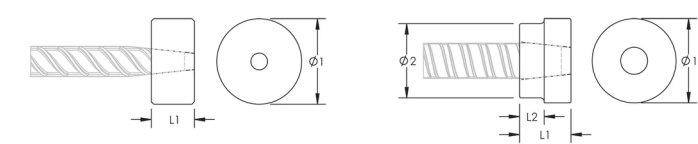
ADDITIONAL PRODUCT DETAILS

Bar dimensions and weights listed may vary by region. Coupler sizes not shown may be available by special order. Contact your nVent LENTON representative for more information.

Thread does not need to be flush with end of nVent LENTON Terminator. Thread may be +/- 2 threads from backside of coupler.

For EL40D16WN and EL50TD16WN, Diameter 2 (Ø2) is larger than Diameter 1 (Ø1).

DIAGRAMS



WARNING

nVent products shall be installed and used only as indicated in nVent's product instruction sheets and training materials. Instruction sheets are available at www.nvent.com and from your nVent customer service representative. Improper installation, misuse, misapplication or other failure to completely follow nVent's instructions and warnings may cause product malfunction, property damage, serious bodily injury and death and/or void your warranty.

North America

+1.800.753.9221
Option 1 – Customer Care
Option 2 – Technical
Support

Europe

Netherlands:
+31 800-0200135
France:
+33 800 901 793

Europe

Germany:
800 1890272
Other Countries:
+31 13 5835404

APAC

Shanghai:
+ 86 21 2412 1618/19
Sydney:
+61 2 9751 8500



Our powerful portfolio of brands:

CADDY ERICO HOFFMAN ILSCO SCHROFF TRACHTE