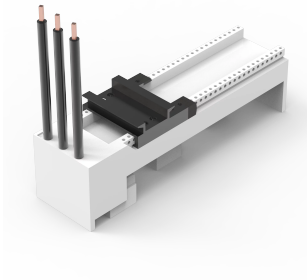


# Busbar Adapter 32A With Cables And 1 Mounting Rail, W060



Busbar adapter with one mounting rail, pre-fitted with cables 6 mm<sup>2</sup>.

## INDUSTRY STANDARDS

---

UL

CSA

GL

## FEATURES

---

Description: Busbar adapter 32 A. With adjustable mounting rails. With leads 6 mm<sup>2</sup>.

Rated voltage: 690 V.

Rated current: 32 A.

For busbars: 12, 15, 20, 25, 30 × 5, 10.

Power dissipation at 80% load: 1.5 W.

Poles: 3-pole.

Pack quantity: 1 pc.

Approvals: CSA, UL, GL.

## SPECIFICATIONS

Table 1/1

Catalog Number	Height	Width	Depth	Material	Finish	Color
32441	200mm	54mm	63mm	Plastic, Mild Steel	Plated	Black, Light Gray
32443	200mm	63mm	63mm	Plastic, Mild Steel	Plated	Black, Light Gray
32446	200mm	81mm	63mm	Plastic, Mild Steel	Plated	Black, Light Gray

## WARNING

nVent products shall be installed and used only as indicated in nVent's product instruction sheets and training materials. Instruction sheets are available at [www.nvent.com](http://www.nvent.com) and from your nVent customer service representative. Improper installation, misuse, misapplication or other failure to completely follow nVent's instructions and warnings may cause product malfunction, property damage, serious bodily injury and death and/or void your warranty.



Our powerful portfolio of brands:

**CADDY ERICO HOFFMAN ILSCO SCHROFF TRACHTE**