

# 1-1 Hole Angle Bracket



## FEATURES

Used to create metal frames with nVent CADDY Eristrut channels

## SPECIFICATIONS

Table 1/2

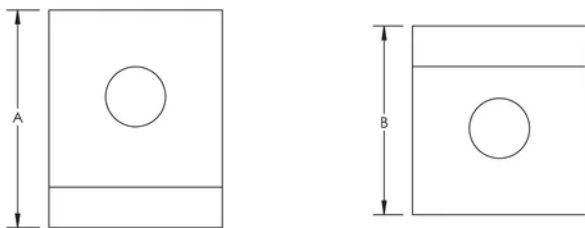
Catalog Number	Article Number	Material	Finish	A	B	Screw Included
ZW200	313330	Steel	Hot-Dip Galvanized	50 mm	48 mm	Yes
ZW201	313340	Steel	Hot-Dip Galvanized	58 mm	42 mm	Yes
ZWA201	387610	Steel	Hot-Dip Galvanized	58 mm	42 mm	No
ZWA200EG	387601	Steel	Electrogalvanized	50 mm	47 mm	No
ZWA200	387600	Steel	Hot-Dip Galvanized	50 mm	48 mm	No
ZWA200S6	388670	Stainless Steel 316 (EN 1.4401)		50 mm	48 mm	No

Table 2/2

Catalog Number	Article Number	Screw Diameter (Sc)	Screw Length (L)
----------------	----------------	---------------------	------------------

ZW200	313330	10 mm	25mm
ZW201	313340	10 mm	25mm
ZWA201	387610		
ZWA200EG	387601		
ZWA200	387600		
ZWA200S6	388670		

## DIAGRAMS



## WARNING

nVent products shall be installed and used only as indicated in nVent's product instruction sheets and training materials. Instruction sheets are available at [www.nvent.com](http://www.nvent.com) and from your nVent customer service representative. Improper installation, misuse, misapplication or other failure to completely follow nVent's instructions and warnings may cause product malfunction, property damage, serious bodily injury and death and/or void your warranty.

#### North America

+1.800.753.9221

Option 1 – Customer Care

Option 2 – Technical

Support

#### Europe

Netherlands:

+31 800-0200135

France:

+33 800 901 793

#### Europe

Germany:

800 1890272

Other Countries:

+31 13 5835404

#### APAC

Shanghai:

+ 86 21 2412 1618/19

Sydney:

+61 2 9751 8500



Our powerful portfolio of brands:

**CADDY**

**ERICO**

**HOFFMAN**

**ILSCO**

**SCHROFF**

**TRACHTE**

