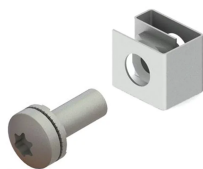


# On-Board Rack Mounting Kit



nVent SCHROFF provides cabinets, sub-racks, and front panels that encase the onboard electronics of train control systems with durable solutions that can withstand railway shock and vibration.

## CERTIFICATIONS



## FEATURES

For mounting electronic components on the on-board rack

To ensure standards-compliant grounding at at least one mounting point, use a grounding cage nut and washer

## SPECIFICATIONS

<b>Product Type:</b>	Mounting Kit
<b>Works With:</b>	On-Board Racks
<b>Material:</b>	Steel
<b>Finish:</b>	Zinc Plated

Table 1/1

Catalog Number	Package Quantity	Quick Ship
21120-205	8	No
21120-206	50	No
21120-207	100	No

**WARNING**

nVent products shall be installed and used only as indicated in nVent's product instruction sheets and training materials. Instruction sheets are available at [www.nvent.com](http://www.nvent.com) and from your nVent customer service representative. Improper installation, misuse, misapplication or other failure to completely follow nVent's instructions and warnings may cause product malfunction, property damage, serious bodily injury and death and/or void your warranty.

**North America**

All locations  
+1.763.422.2661  
Chat with us:  
[nvent.com/schroff](http://nvent.com/schroff)

**Europe**

Straubenhardt, Germany  
+49.7082.794.0  
Betschdorf, France  
+33.3.88.90.64.90  
Warsaw, Poland  
+48.22.209.98.35  
Assago, Italy  
+39.02.932.7141  
Chat with us:  
[nvent.com/schroff](http://nvent.com/schroff)

**Asia**

Shanghai, China  
+86.21.2412.6943  
Qingdao, China  
+86.532.8771.6101  
Singapore  
+65.6768.5800  
Shin-Yokohama, Japan  
+81.45.476.0271  
Chat with us:  
[nvent.com/schroff](http://nvent.com/schroff)

**Middle East & India**

Dubai, United Arab Emirates  
+971.4.378.1700  
Bangalore, India  
+91.80.6715.2001  
Istanbul, Turkey  
+90.216.250.7374  
Chat with us:  
[nvent.com/schroff](http://nvent.com/schroff)



Our powerful portfolio of brands:

**CADDY   ERICO   HOFFMAN   ILSCO   SCHROFF   TRACHTE**