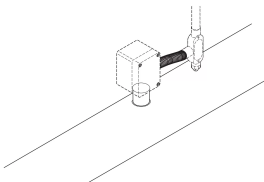


Single-Entry Transition Kit



nVent RAYCHEM JS-100-A is a junction box stand kit with a cold-applied core sealer for use with nVent RAYCHEM BTV, QTVR, XTV, KTV, and VPL heat tracing cables. A separate NEMA 4X junction box is required.

FEATURES

- Simple and fast to install
- Cold-applied: no heat gun or hot work permit required
- Simplified design in hazardous area: integral part of system approval
- Reliable during long life: 10 year extended product warranty available, maintenance free

SPECIFICATIONS

Table 1/1			
Catalog Number	Item Name	Model	Connection Type
166639-000	JS-100-A	Junction Box Stand	Cold Applied

WARNING

nVent products shall be installed and used only as indicated in nVent's product instruction sheets and training materials. Instruction sheets are available at www.nvent.com and from your nVent customer service representative. Improper installation, misuse, misapplication or other failure to completely follow nVent's instructions and warnings may cause product malfunction, property damage, serious bodily injury and death and/or void your warranty.

North America

Tel +1.800.545.6258

Fax +1.800.527.5703

thermal.info@nvent.com

**Europe, Middle East,
Africa**

Tel +32.16.213.511

Fax +32.16.213.604

thermal.info@nvent.com

Asia Pacific

Tel +86.21.2412.1688

Fax +86.21.5426.3167

cn.thermal.info@nvent.com

Latin America

Tel +1.713.868.4800

Fax +1.713.868.2333

thermal.info@nvent.com

Our powerful portfolio of brands:

RAYCHEM PYROTENAX TRACER NUHEAT