

# T-Series Horizontal Transition Filler Material Kit



T-Series horizontal filler material kits contain the following: Filler material, two horizontal packings, pouring basin ceramic guide tube and pouring basin crucible ceramic and disk. All filler material kits contain one-time use components that are sized to a specific sleeve, pouring basin and pouring basin crucible combination. Ordering filler material kits simplifies ordering, reduces order errors and helps ensure proper sizing of components.

## FEATURES

Simplifies ordering

Used to splice different diameter bars

All components are for one-time use

## SPECIFICATIONS

Table 1/1

| Catalog Number | Rebar Size, Metric | Rebar Size, US | Rebar Size, Canada | Package Quantity |
|----------------|--------------------|----------------|--------------------|------------------|
| RBT89101HB     | 28 mm, 25 mm       | #9, #8         | 30M, 25M           | 1                |
| RBT1011101HB   | 36 mm, 32 mm       | #11, #10       |                    | 1                |
| RBT1118101HB   | 57 mm, 36 mm       | #18, #11       | 55M, 35M           | 1                |
| RBT811101HB    | 36 mm, 25 mm       | #11, #8        | 35M, 25M           | 1                |

## ADDITIONAL PRODUCT DETAILS

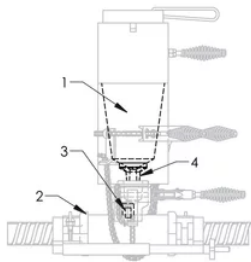
Prior to installation, please read and understand all of the detailed instructions and safety notices provided in the nVent LENTON Cadweld Rebar Splicing System instruction manual.

Filler material kits are a component in splice kits. Care should be taken to avoid duplication of orders.

Components can also be purchased separately: (1) Filler Material, (2) Packing, (3) Pouring Basin Ceramic Guide Tube, and (4) Pouring Basin Ceramic Insert and Disk.

| Filler Material Kit Components |                 |                      |                                       |                                  |
|--------------------------------|-----------------|----------------------|---------------------------------------|----------------------------------|
| Filler Material Kit            | Filler Material | Packing (2 Required) | Pouring Basin Ceramic Insert and Disk | Pouring Basin Ceramic Guide Tube |
| RBT89101HB                     | RBF90           | RBS354711            | RBS5037                               | RBS5038                          |
| RBT811101HB                    | RBF105          | RBS354714            | RBS5037                               | RBS5038                          |
| RBT1011101HB                   | RBF125          | RBS354712            | RBS5037                               | RBS5038                          |
| RBT1118101HB                   | RBF240          | RBS354712            | RBS5037                               | RBS5039                          |

DIAGRAMS



WARNING

nVent products shall be installed and used only as indicated in nVent's product instruction sheets and training materials. Instruction sheets are available at [www.nvent.com](http://www.nvent.com) and from your nVent customer service representative. Improper installation, misuse, misapplication or other failure to completely follow nVent's instructions and warnings may cause product malfunction, property damage, serious bodily injury and death and/or void your warranty.

North America

+1.800.753.9221  
Option 1 – Customer Care  
Option 2 – Technical Support

Europe

Netherlands:  
+31 800-0200135  
France:  
+33 800 901 793

Europe

Germany:  
800 1890272  
Other Countries:  
+31 13 5835404

APAC

Shanghai:  
+ 86 21 2412 1618/19  
Sydney:  
+61 2 9751 8500



Our powerful portfolio of brands:

CADDY   ERICO   HOFFMAN   ILSCO   SCHROFF   TRACHTE