

# End Alignment Fitting



End alignment fittings properly locate the sleeve onto the reinforcing steel. The fittings also retain the packing materials and hold them in place, which helps ensure a leak-free installation.

## FEATURES

Durable, re-usable and long lasting

Easily replaced if damaged

Split-collar design allows for easy installation and removal

## SPECIFICATIONS

**Material:** Steel

Table 1/1

Catalog Number	Rebar Size, Metric	Rebar Size, US	Rebar Size, Canada	Height (H)	Diameter 1 (Ø1)	Diameter 2 (Ø2)
RBM2974100U	20 mm	#6	20M	64 mm	70 mm	36 mm
RBM2974125X	20 mm	#6	20M	64 mm	70 mm	39 mm
RBM2870100A	22 mm	#7		64 mm	70 mm	42 mm
RBM2886112C	25 mm	#8	25M	64 mm	70 mm	49 mm
RBM2886150D	25 mm	#8	25M	64 mm	70 mm	55 mm
RBM2748100D	28 mm	#9	30M	64 mm	70 mm	55 mm

CatalogNumber	Rebar Size, Metric	Rebar Size, US	Rebar Size, Canada	Height (H)	Diameter 1(Ø1)	Diameter 2(Ø2)
RBM275075E	32 mm	#10		64 mm	70 mm	58 mm
RBM2767100E	28 mm	#9	30M	64 mm	70 mm	58 mm
RBM266785F	36 mm	#11	35M	64 mm	76 mm	65 mm
RBM2669100H	43 mm	#14	45M	64 mm	86 mm	74 mm
RBM2669125J	43 mm	#14	45M	64 mm	86 mm	77 mm
RBM266975G	43 mm	#14	45M	64 mm	86 mm	76 mm
RBM2671100M	57 mm	#18	55M	64 mm	111 mm	96 mm
RBM2671125N	57 mm	#18	55M	64 mm	111 mm	99 mm
RBM267150K	57 mm	#18	55M	64 mm	111 mm	87 mm
RBM267156K	57 mm	#18	55M	64 mm	111 mm	87 mm
RBM267885K	43 mm	#14	45M	64 mm	102 mm	87 mm
RBM2687126G	36 mm	#11	35M	64 mm	86 mm	71 mm
RBM2750125F	32 mm	#10		64 mm	76 mm	65 mm
RBM2759K	36 mm	#11	35M	64 mm	102 mm	87 mm

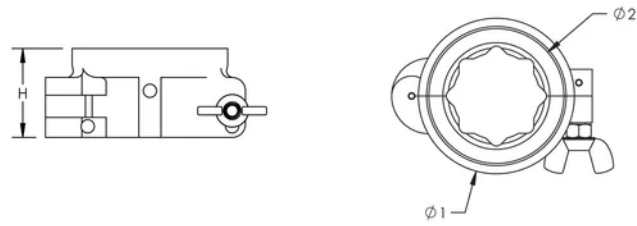
## ADDITIONAL PRODUCT DETAILS

Diameter 2 is the mating surface for the outside diameter of the appropriate sleeve.

Prior to installation, please read and understand all of the detailed instructions and safety notices provided in the nVent LENTON Cadweld Rebar Splicing System Instruction Manual.

Sizes not shown may be available by special order. Contact your nVent LENTON representative for more information.

DIAGRAMS



WARNING

nVent products shall be installed and used only as indicated in nVent's product instruction sheets and training materials. Instruction sheets are available at [www.nvent.com](http://www.nvent.com) and from your nVent customer service representative. Improper installation, misuse, misapplication or other failure to completely follow nVent's instructions and warnings may cause product malfunction, property damage, serious bodily injury and death and/or void your warranty.

North America

+1.800.753.9221  
Option 1 – Customer Care  
Option 2 – Technical  
Support

Europe

Netherlands:  
+31 800-0200135  
France:  
+33 800 901 793

Europe

Germany:  
800 1890272  
Other Countries:  
+31 13 5835404

APAC

Shanghai:  
+ 86 21 2412 1618/19  
Sydney:  
+61 2 9751 8500



Our powerful portfolio of brands:

CADDY   ERICO   HOFFMAN   ILSCO   SCHROFF   TRACHTE