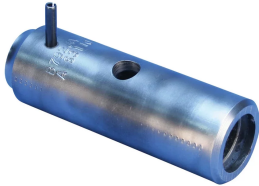


# B-Series Horizontal Sleeve, Top Fill



The top fill horizontal B-Series sleeve is designed to be welded perpendicularly to common grades of structural plates and shapes. Typical applications include welding to base plates, anchor plates and for tying together structural steel members.

Vent holes are added to horizontal sleeves to reduce air entrapment and help ensure proper filling of the sleeve.

## FEATURES

Designed to connect horizontal reinforcing bars and angular reinforcing bars up to 45 degrees

Machined from weldable grades of steel

Works with saw cut, flame cut and sheared bars

Can be visually inspected after installation

Available with extended sleeve lengths

## SPECIFICATIONS

Table 1/3

Catalog Number	Material	Finish	100% U.S. Domestic Content	Sleeve	Rebar Size, Metric	Rebar Size, US
RBB14101JAPB	Steel	Plain	Yes	Standard Length	43 mm	#14

Table 2/3

Catalog Number	Rebar Size, Canada	Diameter 1 (Ø1)	Diameter 2 (Ø2)	Length 1 (L1)	Length 2 (L2)	Length 3 (L3)
RBB14101JAPB	45M	76 mm	54 mm	152 mm	64 mm	26mm

Table 3/3

Catalog Number	Unit Weight
----------------	-------------

RBB14101JAPB

2.72 kg

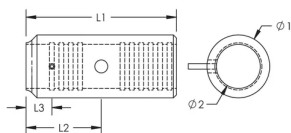
**Designed to** AASHTO;ABNT NBR 8548:1984;ACI 318 Type 1 (125% Specified Yield);ACI 318 Type 2 (Specified  
**Meet:** Tensile);ACI 349;ACI 359;AS3600

## ADDITIONAL PRODUCT DETAILS

Prior to installation, please read and understand all of the detailed instructions and safety notices provided in the nVent LENTON Cadweld Rebar Splicing System Instruction Manual.

Sizes not shown may be available by special order. Contact your nVent LENTON representative for more information.

## DIAGRAMS



## WARNING

nVent products shall be installed and used only as indicated in nVent's product instruction sheets and training materials. Instruction sheets are available at [www.nvent.com](http://www.nvent.com) and from your nVent customer service representative. Improper installation, misuse, misapplication or other failure to completely follow nVent's instructions and warnings may cause product malfunction, property damage, serious bodily injury and death and/or void your warranty.

### North America

+1.800.753.9221

Option 1 – Customer Care

Option 2 – Technical

Support

### Europe

Netherlands:

+31 800-0200135

France:

+33 800 901 793

### Europe

Germany:

800 1890272

Other Countries:

+31 13 5835404

### APAC

Shanghai:

+ 86 21 2412 1618/19

Sydney:

+61 2 9751 8500



Our powerful portfolio of brands:

CADDY

ERICO

HOFFMAN

ILSCO

SCHROFF

TRACHTE