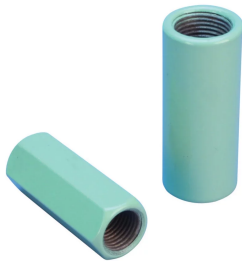


# A2 Standard Coupler, Coated



Coated reinforcing bar is used in place of plain reinforcing bars to protect against corrosion. Typical applications include bridges, parking structures, pavement, marine structures and repair work. nVent LENTON couplers and mechanical anchors are available in multiple coatings to meet specific job requirements.

## CERTIFICATIONS



## FEATURES

Designed to splice the same diameter bars where the second bar can be rotated and is not restricted in its axial direction

Slim design maintains concrete cover

Installs quickly and easily

Multiple coatings available

## SPECIFICATIONS

<b>Finish Standard:</b>	ASTM® A767 Class I
<b>Finish:</b>	Hot-Dip Galvanized
<b>Coupler Protector:</b>	Standard
<b>Material:</b>	Steel

Table 1/2

Catalog Number	Rebar Size, Metric	Rebar Size, US	Rebar Size, Canada	Hex Width (W)	Diameter (Ø)	Length (L)
EL12A2NGV	12 mm	#4	10M	17 mm		42mm

CatalogNumber	Rebar Size, Metric	Rebar Size, US	Rebar Size, Canada	Hex Width (W)	Diameter (Ø)	Length (L)
EL16A2NGV	16 mm	#5	15M	22 mm		56mm
EL20A2NGV	20 mm	#6	20M	27 mm		72mm
EL22A2NGV	22 mm	#7			32 mm	81mm
EL25A2NGV	25 mm	#8	25M		36 mm	86mm
EL28A2NGV	28 mm	#9	30M		40 mm	92mm
EL32A2NGV	32 mm	#10			45 mm	97mm
EL36A2NGV	36 mm	#11	35M		50 mm	102mm
EL40A2NGV	40 mm				55 mm	127mm
EL43TA2NGV	43 mm	#14	45M		60 mm	137mm
EL57TA2NGV	57 mm	#18	55M		80 mm	168mm
EL50TA2NGV	50 mm				70 mm	167mm

Table 2/2

Catalog Number	Bar Depth (BD)	Bar Gap (BG)	Unit Weight
EL12A2NGV	15mm	12mm	0.06 kg
EL16A2NGV	22mm	12mm	0.12 kg
EL20A2NGV	28mm	16mm	0.24 kg
EL22A2NGV	32mm	17mm	0.35 kg
EL25A2NGV	34mm	18mm	0.45 kg
EL28A2NGV	38mm	16mm	0.58 kg

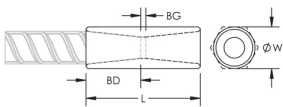
Catalog Number	Bar Depth (BD)	Bar Gap (BG)	Unit Weight
EL32A2NGV	40mm	17mm	0.76 kg
EL36A2NGV	43mm	16mm	0.99 kg
EL40A2NGV	55mm	17mm	1.38 kg
EL43TA2NGV	56mm	25mm	1.92 kg
EL57TA2NGV	71mm	26mm	4.14 kg
EL50TA2NGV	71mm	25mm	3 kg

**Designed to Meet:** AASHTO;ABNT NBR 8548:1984;ACI 318 Type 1 (125% Specified Yield);ACI 318 Type 2 (Specified Tensile);ACI 349;ACI 359;AS3600

## ADDITIONAL PRODUCT DETAILS

Bar dimensions and weights listed may vary by region. Coupler sizes not shown may be available by special order. Contact your nVent LENTON representative for more information.

## DIAGRAMS



## WARNING

nVent products shall be installed and used only as indicated in nVent's product instruction sheets and training materials. Instruction sheets are available at [www.nvent.com](http://www.nvent.com) and from your nVent customer service representative. Improper installation, misuse, misapplication or other failure to completely follow nVent's instructions and warnings may cause product malfunction, property damage, serious bodily injury and death and/or void your warranty.

#### North America

+1.800.753.9221

Option 1 – Customer Care

Option 2 – Technical

Support

#### Europe

Netherlands:

+31 800-0200135

France:

+33 800 901 793

#### Europe

Germany:

800 1890272

Other Countries:

+31 13 5835404

#### APAC

Shanghai:

+ 86 21 2412 1618/19

Sydney:

+61 2 9751 8500



Our powerful portfolio of brands:

**CADDY**

**ERICO**

**HOFFMAN**

**ILSCO**

**SCHROFF**

**TRACHTE**