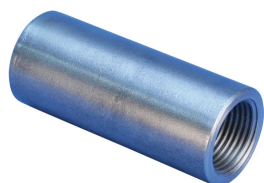


# A12 Standard Coupler for Cryogenic Applications



The nVent LENTON brand of cryogenic reinforcement splicing systems should be specified whenever cryogenic-grade reinforcing bar is used, or during normal operating or emergency conditions where the temperature falls below - 20 °C (-4 °F). By combining the nVent LENTON taper-threaded couplers with state-of-the-art materials, we have developed one of the slimmest couplers on the market, while still maintaining top performance. Typical construction projects include LNG and LPG storage tanks.

## FEATURES

Designed to splice the same diameter bars where the second bar can be rotated and is not restricted in its axial direction

Slim design maintains concrete cover

Installs quickly and easily

Improved performance and reliability at cryogenic temperatures (-168 °C / -270 °F)

## SPECIFICATIONS

**Finish:** Plain

**Material:** Stainless Steel 431 (EN 1.4057)

Table 1/2

Catalog Number	Rebar Size, Metric	Rebar Size, US	Rebar Size, Canada	Diameter (Ø)	Length (L)	Bar Depth (BD)
EL12A12CRN	12 mm	#4	10M	20 mm	50mm	19mm
EL16A12CRN	16 mm	#5	15M	25 mm	61mm	24mm
EL20A12CRN	20 mm	#6	20M	30 mm	87mm	35mm
EL25A12CRN	25 mm	#8	25M	35 mm	97mm	40mm

CatalogNumber	Rebar Size, Metric	Rebar Size, US	Rebar Size, Canada	Diameter (Ø)	Length (L)	Bar Depth (BD)
EL28A12CRN	28 mm	#9	30M	40 mm	101mm	42mm
EL32A12CRN	32 mm	#10		45 mm	108mm	45mm

Table 2/2

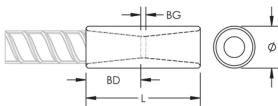
Catalog Number	Bar Gap (BG)	Unit Weight
EL12A12CRN	12mm	0.09 kg
EL16A12CRN	13mm	0.16 kg
EL20A12CRN	17mm	0.32 kg
EL25A12CRN	17mm	0.44 kg
EL28A12CRN	17mm	0.61 kg
EL32A12CRN	18mm	0.79 kg

**Designed to Meet:** ACI 318 Type 1 (125% Specified Yield);ACI 318 Type 2 (Specified Tensile);AS3600;BS EN 1992-1-1;DIN EN 1992-1-1;EN 14620-3;Eurocode 2

## ADDITIONAL PRODUCT DETAILS

Bar dimensions and weights listed may vary by region. Coupler sizes not shown may be available by special order. Contact your nVent LENTON representative for more information.

## DIAGRAMS



## WARNING

nVent products shall be installed and used only as indicated in nVent's product instruction sheets and training materials. Instruction sheets are available at [www.nvent.com](http://www.nvent.com) and from your nVent customer service representative. Improper installation, misuse, misapplication or other failure to completely follow nVent's instructions and warnings may cause product malfunction, property damage, serious bodily injury and death and/or void your warranty.

#### North America

+1.800.753.9221

Option 1 – Customer Care

Option 2 – Technical

Support

#### Europe

Netherlands:

+31 800-0200135

France:

+33 800 901 793

#### Europe

Germany:

800 1890272

Other Countries:

+31 13 5835404

#### APAC

Shanghai:

+ 86 21 2412 1618/19

Sydney:

+61 2 9751 8500



Our powerful portfolio of brands:

**CADDY**

**ERICO**

**HOFFMAN**

**ILSCO**

**SCHROFF**

**TRACHTE**