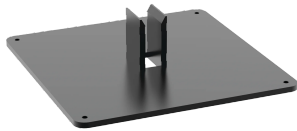


Syspend 281-Max Small Pedestal Base



Syspend 281-Max Small Pedestal Base attaches directly to Syspend 281-Max tube. Constructed from 3/8-in. thick steel plate.

FEATURES

Set screws and cable ties are included

Surface mounting fasteners are not provided

Pre-drilled M10 holes are provided at the four corners for attaching to casters or leveling feet

Assembled Syspend 281 HMI Arm System has a max weight load of 281 lb. (127.7 kg)

SPECIFICATIONS

| Table 1/1 | | | | | | |
|----------------|----------------|--------|-------|-------|----------|---------------|
| Catalog Number | Article Number | Height | Width | Depth | Material | Finish |
| S2MPBS | 18842 | 10mm | 400mm | 400mm | Aluminum | Powder Coated |

WARNING

nVent products shall be installed and used only as indicated in nVent's product instruction sheets and training materials. Instruction sheets are available at www.nvent.com and from your nVent customer service representative. Improper installation, misuse, misapplication or other failure to completely follow nVent's instructions and warnings may cause product malfunction, property damage, serious bodily injury and death and/or void your warranty.



Our powerful portfolio of brands:

CADDY ERICO HOFFMAN ILSCO SCHROFF TRACHTE