

Rail Base Temporary Bond Connector



FEATURES

Can be used on most common rail types

Makes temporary signal bonds and track circuit connections using customer-supplied cable

Hardened contact points on clamps bite through rust and scale

Single conductor connection; solid or stranded

Unique design assures positive contact and firm grip

SPECIFICATIONS

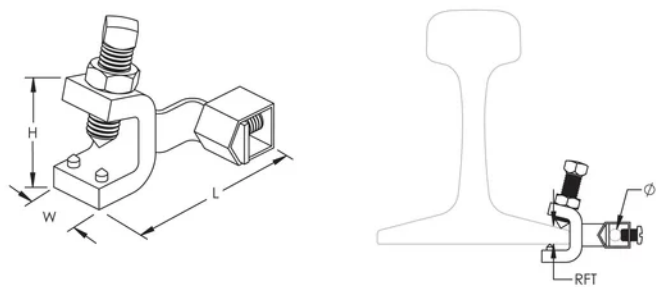
Table 1/2

Catalog Number	Material	Length (L)	Width (W)	Height (H)	Rail Foot Thickness (RFT)	Diameter (Ø)
A140	Steel, Copper	63.5mm	25.4 mm	47.63 mm	15.24 mm Max	4.0 - 9.5 mm

Table 2/2

Catalog Number	Conductor Size
A140	#6 Solid - 1/0 Stranded, 10 mm ² Solid - 50 mm ² Stranded

DIAGRAMS



WARNING

nVent products shall be installed and used only as indicated in nVent's product instruction sheets and training materials. Instruction sheets are available at www.nvent.com and from your nVent customer service representative. Improper installation, misuse, misapplication or other failure to completely follow nVent's instructions and warnings may cause product malfunction, property damage, serious bodily injury and death and/or void your warranty.

North America

+1.800.753.9221
Option 1 – Customer Care
Option 2 – Technical
Support

Europe

Netherlands:
+31 800-0200135
France:
+33 800 901 793

Europe

Germany:
800 1890272
Other Countries:
+31 13 5835404

APAC

Shanghai:
+ 86 21 2412 1618/19
Sydney:
+61 2 9751 8500



Our powerful portfolio of brands:

CADDY ERICO HOFFMAN ILSCO SCHROFF TRACHTE