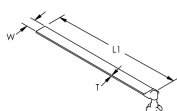
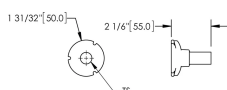


# Earthbridge DB, One Stud, Steel Tape, 90° Angle



Earthbridges are assemblies made from a high-quality conductive earthpoint (connecting terminal) and various types of conductors. The nVent ERICO Cadweld exothermic connection process is used to combine them together, forming a highly corrosion resistant and long-lasting assembly.

## DIAGRAMS



## FEATURES

Long-lasting design

Low ground resistance and impedance

Superior electrical conductivity and resistance to corrosion

Electrically and mechanically robust and reliable

Easy to install

## SPECIFICATIONS

<b>Material:</b>	Copper;Steel
<b>Earthpoint Type:</b>	DB, One Stud
<b>Conductor Type:</b>	Steel Tape, 90° Angle

Table 1/3

Catalog Number	Article Number	Type	Tape Size	Length (L)	Width (W)	Thickness (T)
KDB16400	340406	DBTP	40 x 5 mm	400mm	40 mm	5 mm

CatalogNumber	Article Number	Type	Tape Size	Length (L)	Width (W)	Thickness (T)
DB16T40P040C		DBTP	40 x 5 mm	400mm	40 mm	5 mm

Table 2/3

Catalog Number	Article Number	Diameter (Ø)	Thread Size (TS)	Angle (a)	Rebar Assembly Type	Hardware Included
KDB16400	340406	50 mm	M16	90 °	Arc Welding to Rebar	No
DB16T40P040C		50 mm	M16	90 °	Arc Welding to Rebar	No

Table 3/3

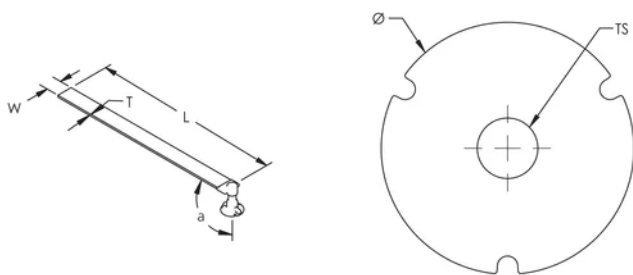
Catalog Number	Article Number	Earthbridge Application	Complies With
KDB16400	340406	Tunnel	RIL 997.02050A01 (Construction 2 Ik > 25 kA), EN IEC® 62561-1 Class H 100kA
DB16T40P040C		Tunnel	RIL 997.02050A01 (Construction 2 Ik > 25 kA), EN IEC® 62561-1 Class H 100kA

## ADDITIONAL PRODUCT DETAILS

Includes (1) plastic cap and (1) protective label.

DB-16-C-70-S-050-C		
DB	Earth Point	DB: 1 hole BT: 2 holes BF: 4 holes LU: M16 lug TA: tape
16	Thread Size	10: M10 12: M12 16: M16 40: Tape 40x5mm 30: Tape 30x4mm
C	Conductor Type	K: Steel Rond C: Y/G Cable T: Steel Bar F: Steel Bar 4mm N: NYY-O Cable H: N2XH-0 Cable
70	Conductor Size	12: D12mm 16: D16mm 30: 30x4mm 40: 40x5mm 50: 50mm <sup>2</sup> 70: 70mm <sup>2</sup> 95: 95mm <sup>2</sup>
S	Conductor Angle	S: 0° P: 90° A: 45°
050	Length (cm)	xxx
x	Termination (option if cable)	SR: Solid Round EP: Earthpoint perpendicular ES: Earthpoint straight TA: Tape of 100mm TP: Tape of 150mm LU: M16 lug
x	Bolts & Washer	- : No Hardware H: With Hardware
C	Packaging	- : by unit (Made-to-Stock) C: 5 pieces (Made-to-Order) G: 25 pieces (Made-to-Order)

## DIAGRAMS



**WARNING**

nVent products shall be installed and used only as indicated in nVent's product instruction sheets and training materials. Instruction sheets are available at [www.nvent.com](http://www.nvent.com) and from your nVent customer service representative. Improper installation, misuse, misapplication or other failure to completely follow nVent's instructions and warnings may cause product malfunction, property damage, serious bodily injury and death and/or void your warranty.

**North America**

+1.800.753.9221  
Option 1 – Customer Care  
Option 2 – Technical  
Support

**Europe**

Netherlands:  
+31 800-0200135  
France:  
+33 800 901 793

**Europe**

Germany:  
800 1890272  
Other Countries:  
+31 13 5835404

**APAC**

Shanghai:  
+ 86 21 2412 1618/19  
Sydney:  
+61 2 9751 8500



Our powerful portfolio of brands:

**CADDY   ERICO   HOFFMAN   ILSCO   SCHROFF   TRACHTE**