

# Earthbridge DB, One Stud, NYY Cable to Tape, Straight



Earthbridges are assemblies made from a high-quality conductive earthpoint (connecting terminal) and various types of conductors. The nVent ERICO Cadweld exothermic connection process is used to combine them together, forming a highly corrosion resistant and long-lasting assembly.

## DIAGRAMS



## FEATURES

Long-lasting design

Low ground resistance and impedance

Superior electrical conductivity and resistance to corrosion

Electrically and mechanically robust and reliable

Easy to install

## SPECIFICATIONS

<b>Material:</b>	Copper;Steel
<b>Earthpoint Type:</b>	DB, One Stud
<b>Conductor Type:</b>	NYY Cable to Tape, Straight

Table 1/3

Catalog Number	Article Number	Type	Conductor Size	Length 1 (L1)	Length 2 (L2)	Height (H)
----------------	----------------	------	----------------	---------------	---------------	------------

FDB1670500	340401	DBNSTA	70 mm <sup>2</sup> Stranded	500 mm	100 mm	30 mm
DB16N70S050T A		DBNSTA	70 mm <sup>2</sup> Stranded	500 mm	100 mm	30 mm
FDB16951000	340407	DBNSTA	95 mm <sup>2</sup> Stranded	1000 mm	100 mm	40 mm
FDB1695500	340403	DBNSTA	95 mm <sup>2</sup> Stranded	500 mm	100 mm	40 mm
DB16N95S050T A		DBNSTA	95 mm <sup>2</sup> Stranded	500 mm	100 mm	40 mm

Table 2/3

Catalog Number	Article Number	Thickness (T)	Diameter (Ø)	Thread Size (TS)	Rebar Assembly Type	Hardware Included
FDB1670500	340401	4 mm	50 mm	M16	Arc Welding to Rebar	No
DB16N70S050T A		4 mm	50 mm	M16	Arc Welding to Rebar	No
FDB16951000	340407	5 mm	50 mm	M16	Arc Welding to Rebar	No
FDB1695500	340403	5 mm	50 mm	M16	Arc Welding to Rebar	No
DB16N95S050T A		5 mm	50 mm	M16	Arc Welding to Rebar	No

Table 3/3

Catalog Number	Article Number	Tape Size	Earthbridge Application	Complies With
FDB1670500	340401		Tunnel	RIL 997.02050A01 (Construction 1 Ik 25 kA), EN IEC® 62561-1 Class H 100kA
DB16N70S050TA			Tunnel	RIL 997.02050A01 (Construction 1 Ik 25 kA), EN IEC® 62561-1 Class H 100kA

Catalog Number	Article Number	Tape Size	Earthbridge Application	Complies With
FDB16951000	340407	40 x 5 mm	Tunnel	RIL 997.02050A01 (Construction 2 Ik > 25 kA), EN IEC® 62561-1 Class H 100kA
FDB1695500	340403	40 x 5 mm	Tunnel	RIL 997.02050A01 (Construction 2 Ik > 25 kA), EN IEC® 62561-1 Class H 100kA
DB16N95S050TA		40 x 5 mm	Tunnel	RIL 997.02050A01 (Construction 2 Ik > 25 kA), EN IEC® 62561-1 Class H 100kA

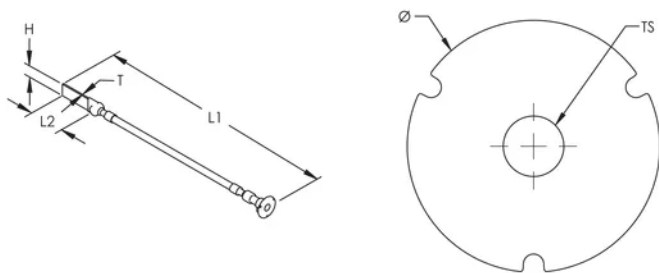
### ADDITIONAL PRODUCT DETAILS

---

Includes (1) plastic cap and (1) protective label.

DB-16-C-70-S-050-C		
DB	Earth Point	DB: 1 hole BT: 2 holes BF: 4 holes LU: M16 lug TA: tape
16	Thread Size	10: M10 12: M12 16: M16 40: Tape 40x5mm 30: Tape 30x4mm
C	Conductor Type	K: Steel Rond C: Y/G Cable T: Steel Bar F: Steel Bar 4mm N: NYY-O Cable H: N2XH-0 Cable
70	Conductor Size	12: D12mm 16: D16mm 30: 30x4mm 40: 40x5mm 50: 50mm <sup>2</sup> 70: 70mm <sup>2</sup> 95: 95mm <sup>2</sup>
S	Conductor Angle	S: 0° P: 90° A: 45°
050	Length (cm)	xxx
x	Termination (option if cable)	SR: Solid Round EP: Earthpoint perpendicular ES: Earthpoint straight TA: Tape of 100mm TP: Tape of 150mm LU: M16 lug
x	Bolts & Washer	- : No Hardware H: With Hardware
C	Packaging	- : by unit (Made-to-Stock) C: 5 pieces (Made-to-Order) G: 25 pieces (Made-to-Order)

## DIAGRAMS



**WARNING**

nVent products shall be installed and used only as indicated in nVent's product instruction sheets and training materials. Instruction sheets are available at [www.nvent.com](http://www.nvent.com) and from your nVent customer service representative. Improper installation, misuse, misapplication or other failure to completely follow nVent's instructions and warnings may cause product malfunction, property damage, serious bodily injury and death and/or void your warranty.

**North America**

+1.800.753.9221  
Option 1 – Customer Care  
Option 2 – Technical  
Support

**Europe**

Netherlands:  
+31 800-0200135  
France:  
+33 800 901 793

**Europe**

Germany:  
800 1890272  
Other Countries:  
+31 13 5835404

**APAC**

Shanghai:  
+ 86 21 2412 1618/19  
Sydney:  
+61 2 9751 8500



Our powerful portfolio of brands:

**CADDY   ERICO   HOFFMAN   ILSCO   SCHROFF   TRACHTE**