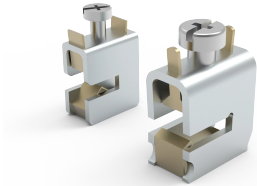


# Universal Connection Terminal, WO60



Terminals for connecting round conductors on to flat busbars 1,5 mm<sup>2</sup> to 120 mm<sup>2</sup>.

## INDUSTRY STANDARDS

---

UL

CSA

GL

DNV-GL

## FEATURES

---

Description: Universal conductor terminal with integrated holding spring, a captive clamping screw, and open terminal space.

Rated voltage: 690 V

Approvals: CSA, UL, GL, DNV-GL

Indication of nominal cross-section and tightening torque is noted on the terminal

Can be used with cover cap 01590

Universal conductor terminal with integrated holding spring, a captive clamping screw, and open terminal space

Rated voltage: 690 V

## SPECIFICATIONS

**Material:** Mild Steel

**Finish:** Plated

Table 1/1

Catalog Number	Height	Width	Depth	Connection Type	Max Current	Package Quantity
01068	15mm	17mm	21mm	16 - 120 mm <sup>2</sup>	440A	25
01284	7.5mm	7.5mm	21mm	1.5 - 16 mm <sup>2</sup>	180A	100
01285	11mm	10.5mm	21mm	4 - 35 mm <sup>2</sup>	270A	50
01287	14mm	14mm	21mm	16 - 70 mm <sup>2</sup>	400A	25
01289	7.5mm	7.5mm	21mm	1.5 - 16 mm <sup>2</sup>	180A	100
01203	15mm	17mm	21mm	16 - 120 mm <sup>2</sup>	440A	25
01290	11mm	10.5mm	21mm	4 - 35 mm <sup>2</sup>	270A	50
01292	14mm	14mm	21mm	16 - 70 mm <sup>2</sup>	400A	25

## WARNING

nVent products shall be installed and used only as indicated in nVent's product instruction sheets and training materials. Instruction sheets are available at [www.nvent.com](http://www.nvent.com) and from your nVent customer service representative. Improper installation, misuse, misapplication or other failure to completely follow nVent's instructions and warnings may cause product malfunction, property damage, serious bodily injury and death and/or void your warranty.



Our powerful portfolio of brands:

**CADDY   ERICO   HOFFMAN   ILSCO   SCHROFF   TRACHTE**