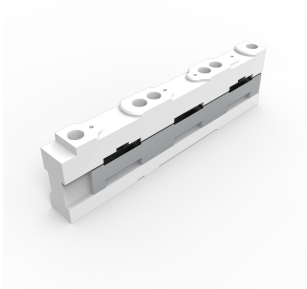


# Universal Busbar Support, W060



Busbar support that enables creation of a safe and easy to use system with 60 mm distance between busbar systems.

## INDUSTRY STANDARDS

---

GL

DNV-GL

## FEATURES

---

Description: Universal busbar support 3/4-Pole with internal screw holes, delivered without end cover.

Rated voltage: 690 V

Rated frequency: 50/60 Hz

Rated isolation voltage  $U_i$ : 1000 V

Rated surge voltage  $U_{imp}$ : 8 kV

Approvals: GL, DNV GL

Rated frequency: 50/60 Hz

Rated isolation voltage  $U_i$ : 1000 V

Rated surge voltage  $U_{imp}$ : 8 kV

SPECIFICATIONS

Table 1/1						
Catalog Number	Height	Width	Depth	Enclosure Material	Product Family	Material
01485	20mm	242mm	51mm	Plastic, Steel	IEC General Accessories	Plastic, Steel
01495	20mm	191mm	50mm	Plastic, Steel	IEC General Accessories	Plastic, Steel

WARNING

nVent products shall be installed and used only as indicated in nVent's product instruction sheets and training materials. Instruction sheets are available at [www.nvent.com](http://www.nvent.com) and from your nVent customer service representative. Improper installation, misuse, misapplication or other failure to completely follow nVent's instructions and warnings may cause product malfunction, property damage, serious bodily injury and death and/or void your warranty.



Our powerful portfolio of brands:

CADDY   ERICO   HOFFMAN   ILSCO   SCHROFF   TRACHTE