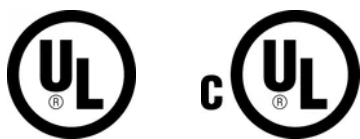


# Through Wall/Roof Assembly, Parallel Conductor to Parallel Conductor



## CERTIFICATIONS



## FEATURES

Allows for lightning protection conductors to be concealed in ceiling or walls

## SPECIFICATIONS

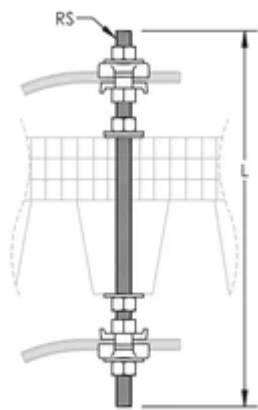
Table 1/1

Catalog Number	Conductor Size, UL	Material	Connection Material	Rod Length (L)	Unit Weight
LPC619	Class 1 - Class 2 (4/0 Max)	Copper, Stainless Steel 18-8 (EN 1.4305)	Copper - Copper	304.8mm	0.65 kg

## ADDITIONAL PRODUCT DETAILS

Always consult the roof manufacturer or owner for proper flashing materials.

DIAGRAMS



WARNING

nVent products shall be installed and used only as indicated in nVent's product instruction sheets and training materials. Instruction sheets are available at [www.nvent.com](http://www.nvent.com) and from your nVent customer service representative. Improper installation, misuse, misapplication or other failure to completely follow nVent's instructions and warnings may cause product malfunction, property damage, serious bodily injury and death and/or void your warranty.

North America

+1.800.753.9221  
Option 1 – Customer Care  
Option 2 – Technical  
Support

Europe

Netherlands:  
+31 800-0200135  
France:  
+33 800 901 793

Europe

Germany:  
800 1890272  
Other Countries:  
+31 13 5835404

APAC

Shanghai:  
+ 86 21 2412 1618/19  
Sydney:  
+61 2 9751 8500



Our powerful portfolio of brands:

CADDY   ERICO   HOFFMAN   ILSCO   SCHROFF   TRACHTE