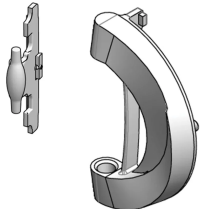


Novastar Hinge

Novastar Hinge Spare Part.



CERTIFICATIONS



FEATURES

Novastar Hinge Spare Part

SPECIFICATIONS

Table 1/2

Catalog Number	Works With	Design Feature	Color Code	Material	Package Quantity	Product Family
27230-133	Glass Door	Frame Hinges	RAL 9005	Polyamide	2	Novastar
27230-196	Steel Door	Frame & Door Hinges	RAL 9005	Polyamide	2	Novastar

Table 2/2

Catalog Number	Type	Certifications	Quick Ship
27230-133	Hinge		No
27230-196	Hinge	RoHS	No

WARNING

nVent products shall be installed and used only as indicated in nVent's product instruction sheets and training materials. Instruction sheets are available at www.nvent.com and from your nVent customer service representative. Improper installation, misuse, misapplication or other failure to completely follow nVent's instructions and warnings may cause product malfunction, property damage, serious bodily injury and death and/or void your warranty.

North America

All locations
+1.763.422.2661
Chat with us:
nvent.com/schroff

Europe

Straubenhardt, Germany
+49.7082.794.0
Betschdorf, France
+33.3.88.90.64.90
Warsaw, Poland
+48.22.209.98.35
Assago, Italy
+39.02.932.7141
Chat with us:
nvent.com/schroff

Asia

Shanghai, China
+86.21.2412.6943
Qingdao, China
+86.532.8771.6101
Singapore
+65.6768.5800
Shin-Yokohama, Japan
+81.45.476.0271
Chat with us:
nvent.com/schroff

Middle East & India

Dubai, United Arab Emirates
+971.4.378.1700
Bangalore, India
+91.80.6715.2001
Istanbul, Turkey
+90.216.250.7374
Chat with us:
nvent.com/schroff



Our powerful portfolio of brands:

CADDY ERICO HOFFMAN ILSCO SCHROFF TRACHTE