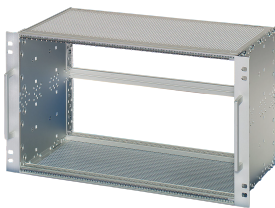


# EuropacPRO 19" Subrack Kit for Railway, Shielded, EN 50155, CompactPCI

## Power Utilities



Subrack for Railway applications, conform to EN50155 standard, for Compact PCI applications.

## CERTIFICATIONS



## FEATURES

Shock and vibration tested to EN 50155, part 12.2.11

The 19" bracket is firmly fixed to the side panel (tox-cold welded) and is especially suited for high mechanical stresses (vibration resistance)

The double 19" screwing position adds to additionally safety (NFF standard)

IP 20, in accordance with IEC 60529

EMC of approximately 40 dB at 1 GHz, 30 dB at 2 GHz, assuming that the front is covered with shielded front panels, testing in accordance with VG 95373 part 15

Aluminum construction

Supplied as space-saving flat-pack

## SPECIFICATIONS

Table 1/3

Catalog Number	Rack Height	Package Quantity	For Mounting	Board Depth	EMC Gasket Type	Shock and Vibration Tolerance
21500-081	3 U	1	Backplane	160 mm	Textile	5 g (force)
21500-082	6 U	1	Backplane	160 mm	Textile	5 g (force)

Table 2/3

Catalog Number	Handle Included	Mounting	Complies With	Depth	EMC Shielding	Product Type
21500-081	Yes	Rack	IEC 60297-3-103, IEEE 1101.10, IEEE 1101.11, EN 50155 part 12.2.11	235 mm	Yes	Subrack/Chassis
21500-082	Yes	Rack	IEC 60297-3-103, IEEE 1101.10, IEEE 1101.11, EN 50155 part 12.2.11	235 mm	Yes	Subrack/Chassis

Table 3/3

Catalog Number	Rack Width	Static Load
21500-081	84 HP	15 kgf
21500-082	84 HP	15 kgf

## ADDITIONAL PRODUCT DETAILS

Test reports are available online.

Individual configuration: broad range of variants in height, width and depth; guide rails for a wide variety of applications; interior options; accessories and mounting material.

## WARNING

nVent products shall be installed and used only as indicated in nVent's product instruction sheets and training materials. Instruction sheets are available at [www.nvent.com](http://www.nvent.com) and from your nVent customer service representative. Improper installation, misuse, misapplication or other failure to completely follow nVent's instructions and warnings may cause product malfunction, property damage, serious bodily injury and death and/or void your warranty.



Our powerful portfolio of brands:

**CADDY   ERICO   HOFFMAN   ILSCO   SCHROFF   TRACHTE**