

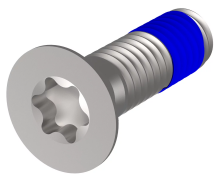
Assembly Parts for Rugged Components, Screw, Countersunk, Torx, with Thread-locking Compound, M4 x 14

Power Utilities

CATALOG NUMBER

24566-101

Assembly parts with thread-locking compound for rugged Side Panel, horizontal rail, cover plates, rear angle.



CERTIFICATIONS



FEATURES

Screws for the following fixings: Rugged side panel - horizontal rail, Rugged side panel - cover plate, Rugged side panel - rear angle

PRODUCT ATTRIBUTES

Product Type: Assembly Kit

Type: Countersunk Screw

Works With: Subracks

Thread Size: M4

Length: 14 mm

Material: Stainless Steel

Package Quantity: 100

WARNING

nVent products shall be installed and used only as indicated in nVent's product instruction sheets and training materials. Instruction sheets are available at www.nvent.com and from your nVent customer service representative. Improper installation, misuse, misapplication or other failure to completely follow nVent's instructions and warnings may cause product malfunction, property damage, serious bodily injury and death and/or void your warranty.



Our powerful portfolio of brands:

CADDY ERICO HOFFMAN ILSCO SCHROFF TRACHTE