

# nVent LENTON Form Saver Anchor



The nVent LENTON Form Saver Anchor mechanical reinforcing bar splicing system provides a method of splicing reinforcing bar in segmental concrete construction applications that have limited space or are severely congested. The coupler is friction forged to the headed anchor/shear stud.

Typically used in wall applications, the nVent LENTON Form Saver Anchor easily attaches to the front wall form panel and fits into the wall reinforcement mat more easily than a hooked reinforcing bar. When the form is stripped, the protected threaded end of the coupler is exposed on the wall face. Simply remove the protective cap, install the nVent LENTON taper threaded dowel bar. This system eliminates hooked bar congestion, protruding dowels and the need to drill holes in expensive formwork.

## FEATURES

The headed anchor/shear stud is C-1010/C-1020 AWS D1.1 and ASTM®-A108 compliant

Durable mounting plates allow for easy attachment to forms

Built-in thread cover or screw-in plug protects internal threads from concrete paste contamination

## SPECIFICATIONS

**Finish:** Plain

**Material:** Steel

Table 1/2

| Catalog Number | Rebar Size, Metric | Rebar Size, US | Rebar Size, Canada | Hex Width (W) | Diameter 1 (Ø1) | Diameter 2 (Ø2) |
|----------------|--------------------|----------------|--------------------|---------------|-----------------|-----------------|
| EP4X6          | 12 mm              | #4             | 10M                | 22 mm         | 16 mm           | 32 mm           |
| EP4X7          | 12 mm              | #4             | 10M                | 22 mm         | 16 mm           | 32 mm           |
| EP4X8          | 12 mm              | #4             | 10M                | 22 mm         | 16 mm           | 32 mm           |
| EP5X6          | 16 mm              | #5             | 15M                | 22 mm         | 19 mm           | 32 mm           |

| CatalogNumber | Rebar Size, Metric | Rebar Size, US | Rebar Size, Canada | Hex Width (W) | Diameter 1(Ø1) | Diameter 2(Ø2) |
|---------------|--------------------|----------------|--------------------|---------------|----------------|----------------|
| EP5X7         | 16 mm              | #5             | 15M                | 22 mm         | 19 mm          | 32 mm          |

Table 2/2

| Catalog Number | Height (H) | Length (L) | Bar Depth (BD) | Coupler Body (CB) | Unit Weight |
|----------------|------------|------------|----------------|-------------------|-------------|
| EP4X6          | 57 mm      | 146mm      | 21mm           | 43mm              | 0.36 kg     |
| EP4X7          | 57 mm      | 172mm      | 21mm           | 43mm              | 0.41 kg     |
| EP4X8          | 57 mm      | 206mm      | 21mm           | 43mm              | 0.45 kg     |
| EP5X6          | 57 mm      | 156mm      | 29mm           | 49mm              | 0.45 kg     |
| EP5X7          | 57 mm      | 181mm      | 29mm           | 49mm              | 0.51 kg     |

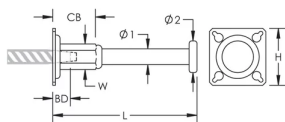
**Designed to Meet:** AASHTO;ACI 318 Type 1 (125% Specified Yield);CAN/CSA - N287.2/.3/.4;IBC Type 1 (125% Specified Yield);US Army Corps of Engineers;CAN/CSA - A23.3

## ADDITIONAL PRODUCT DETAILS

Bar dimensions and weights listed may vary by region. Coupler sizes not shown may be available by special order. Contact your nVent LENTON representative for more information.

Minimum embedment length required to develop 125% of minimum specified yield on ASTM® A-615 Grade 60 reinforcing steel in 3000–5000 psi (20-30 MPa) concrete (based on ASME/ACI codes).

## DIAGRAMS



## WARNING

nVent products shall be installed and used only as indicated in nVent's product instruction sheets and training materials. Instruction sheets are available at [www.nvent.com](http://www.nvent.com) and from your nVent customer service representative. Improper installation, misuse, misapplication or other failure to completely follow nVent's instructions and warnings may cause product malfunction, property damage, serious bodily injury and death and/or void your warranty.

#### North America

+1.800.753.9221

Option 1 – Customer Care

Option 2 – Technical

Support

#### Europe

Netherlands:

+31 800-0200135

France:

+33 800 901 793

#### Europe

Germany:

800 1890272

Other Countries:

+31 13 5835404

#### APAC

Shanghai:

+ 86 21 2412 1618/19

Sydney:

+61 2 9751 8500



Our powerful portfolio of brands:

**CADDY**

**ERICO**

**HOFFMAN**

**ILSCO**

**SCHROFF**

**TRACHTE**