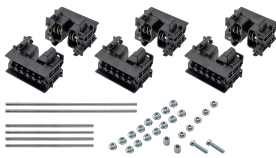


nVent ERIFLEX Flexbus Support Kit on Edge 3 Poles

Data Solutions



CERTIFICATIONS



FEATURES

Adjustable clip adapts to support different conductor thicknesses (open/closed position)

Strong, mechanical resistance and short-circuit tested as per IEC 61914 up to 67kA rms – 147kA Peak

Adjustable distance between each conductor (12,5 mm pitch)

Installation side-by-side or on top

For use with 3P configuration

Mounting options for ceiling or wall

Mounting options for different cable trays types

Mounting options for horizontal or vertical orientations

SPECIFICATIONS

Insulation Voltage:	1000; 1500
Dielectric Strength, UL:	1500; 1500

Dielectric Strength, IEC 61439.1:	3500 VAC @ 1 min
Finish:	Electrogalvanized
Material:	Glass Fibre Reinforced Polyamide; Steel
Complies With:	IEC® 60695-2-11 (Glow Wire Test 960 °C); IEC® 61439.1; IEC® 61914
Halogen Free Rating:	IEC® 60754-1
Low Smoke Rating:	ISO 5659-2
Flammability Rating:	UL® 94V-0
Working Temperature:	-40 to 130°C

Table 1/1						
Catalog Number	Article Number	A	Depth (D)	Height (H)	Conductor Size	Unit Weight
FLEXSUPEDG50 T	508101	87.5mm	78.5mm	123.5mm	220 mm², 360 mm², 545 mm², 640 mm²	1.24kg
FLEXSUPEDG10 OT	508103	100mm	78.5mm	175.5mm	960 mm², 1280 mm², 1810 mm²	1.52kg

Installation Standard:	AS 3008; BS 7671; CEI 64-8; CSN; DIN VDE 0100; HD 384; IEC® 60364; NBR 5410; NEN 1010; NFC 15-100; NIBT-NIN; NP (2002); ÕNORM; REBT; RGIE-AREI
-------------------------------	--

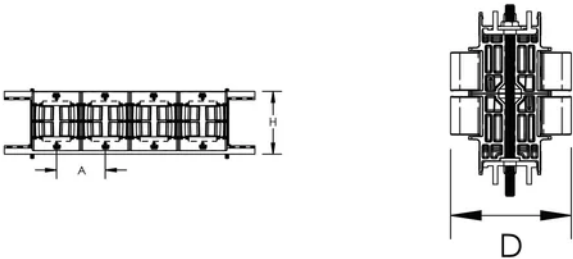
ADDITIONAL PRODUCT DETAILS

Support kit and aluminum profile are sold separately.

When cable tray is used, we recommend installing a Flexbus Support at each extremity, in order to protect the Flexbus Conductor against potential sharp edges of the cable tray.

For ease of installation of the Flexbus Conductors on cable trays, we recommend using cantilever systems in order to have easy and direct access during installation phases.

DIAGRAMS



WARNING

nVent products shall be installed and used only as indicated in nVent's product instruction sheets and training materials. Instruction sheets are available at www.nvent.com and from your nVent customer service representative. Improper installation, misuse, misapplication or other failure to completely follow nVent's instructions and warnings may cause product malfunction, property damage, serious bodily injury and death and/or void your warranty.



Our powerful portfolio of brands:

CADDY ERICO HOFFMAN ILSCO SCHROFF TRACHTE