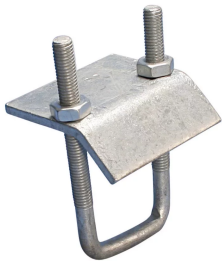


# Strut Beam Clamp with U-Bolt



## FEATURES

Complete with U-bolt and nuts

Requires installation in pairs

## SPECIFICATIONS

Table 1/3

Catalog Number	Article Number	Material	Finish	Strut Type	Rod Size (RS)	Flange Thickness (FT)
ZTA601HD	387701	Steel	Hot-Dip Galvanized	A (41 x 41 mm), C (21 x 41 mm), CC (41 x 41 mm)	10	18 mm Max
ZTA601S6	387710	Stainless Steel 316 (EN 1.4401)		A (41 x 41 mm), C (21 x 41 mm), CC (41 x 41 mm)	10	18 mm Max
ZTA602HD	388006	Steel	Hot-Dip Galvanized	A (41 x 41 mm), AA (83 x 41 mm), D (62 x 41 mm), E (83 x 41 mm)	10	18 mm Max
ZTA603HD	388066	Steel	Hot-Dip Galvanized	DD (124 x 41 mm)	10	18 mm Max

Table 2/3

Catalog Number	Article Number	Width (W)	Thickness (T)	A	B	C
ZTA601HD	387701	80 mm	6 mm	24 mm	45 mm	95 mm
ZTA601S6	387710	80 mm	6 mm	24 mm	45 mm	110 mm
ZTA602HD	388006	80 mm	6 mm	24 mm	45 mm	140 mm
ZTA603HD	388066	80 mm	6 mm	24 mm	45 mm	180 mm

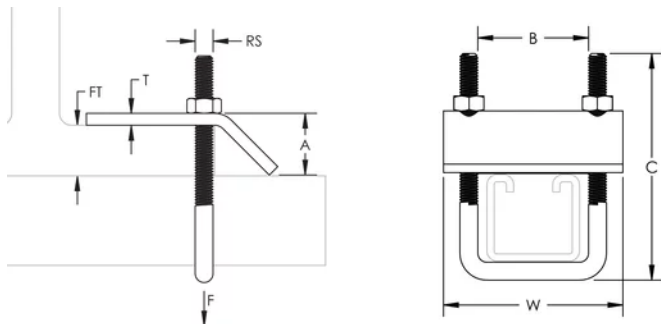
Table 3/3

Catalog Number	Article Number	Static Load
ZTA601HD	387701	5000N
ZTA601S6	387710	5000N
ZTA602HD	388006	5000N
ZTA603HD	388066	5000N

## ADDITIONAL PRODUCT DETAILS

Static Load is based on one pair of Strut Beam Clamps.

## DIAGRAMS



## WARNING

nVent products shall be installed and used only as indicated in nVent's product instruction sheets and training materials. Instruction sheets are available at [www.nvent.com](http://www.nvent.com) and from your nVent customer service representative. Improper installation, misuse, misapplication or other failure to completely follow nVent's instructions and warnings may cause

product malfunction, property damage, serious bodily injury and death and/or void your warranty.

**North America**

+1.800.753.9221  
Option 1 – Customer Care  
Option 2 – Technical  
Support

**Europe**

Netherlands:  
+31 800-0200135  
France:  
+33 800 901 793

**Europe**

Germany:  
800 1890272  
Other Countries:  
+31 13 5835404

**APAC**

Shanghai:  
+ 86 21 2412 1618/19  
Sydney:  
+61 2 9751 8500



Our powerful portfolio of brands:

**CADDY   ERICO   HOFFMAN   ILSCO   SCHROFF   TRACHTE**

