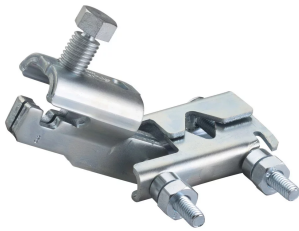


Trapeze Sway Brace, Pipe

Data Solutions



CERTIFICATIONS



FEATURES

Seismically braces trapeze hangers

Retrofit ability allows for the brace to be installed after the trapeze assembly is installed

Works with brace members of schedule 40 pipe, EMT conduit, and rigid conduit

One wrench size fits all required hardware, eliminating the need to change tools

Shear-off head helps ensure correct torque and simplifies inspection

FM Specification Tested with the following brace members: 1-2 in Sch40 Pipe, 1 in EMT Conduit, and 1 in Rigid Conduit

SPECIFICATIONS

Table 1/2

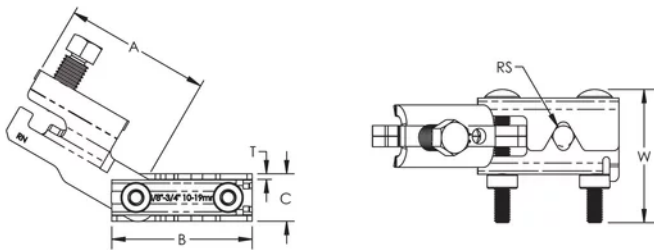
Catalog Number	Article Number	Material	Finish	Rod Size (RS)	Width (W)	Thickness (T)
CSBR1	404566	Steel	Electrogalvanized	10, 12, 16, 20	81.3mm	3.4mm

Table 2/2

Catalog Number	Article Number	A	B	C
CSBR1	404566	88.9mm	86.4mm	29mm

FM Loads					
Part Number	Brace Member	Horizontal Capacity per Installation Angle from Vertical			
		30° - 44°	45° - 59°	60° - 74°	75° - 90°
CSBR1	EN 10255 H	3360 N	4930 N	7730 N	7730 N

DIAGRAMS



WARNING

nVent products shall be installed and used only as indicated in nVent's product instruction sheets and training materials. Instruction sheets are available at www.nvent.com and from your nVent customer service representative. Improper installation, misuse, misapplication or other failure to completely follow nVent's instructions and warnings may cause product malfunction, property damage, serious bodily injury and death and/or void your warranty.



Our powerful portfolio of brands:

CADDY ERICO HOFFMAN ILSCO SCHROFF TRACHTE