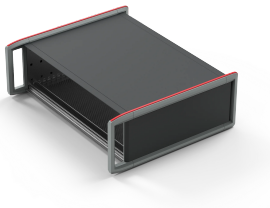


RatiopacPRO Style, Front Handles and Rear Circulating Trim, Standard Screwing



The versatile RatiopacPRO Style desktop case features a protective frame design, rubber strips, and various configuration options.

The Front and Rear Trims with Top & Bottom Rubber Strip option provides connector safeguarding and integrated stacking capability. The Circulated Rubber Strip design protects corner and is ideal for smaller mobile cases. For larger equipment, the Front Handle offers convenient carrying and rear connector protection.

Designed for 19" components with guide rails or proprietary components with a mounting plate, RatiopacPRO Style caters to your specific requirements.

FEATURES

Desktop case with protective frame design and front handles for a easy handling. Rear side with a circulating rubber strip to protect the enclosure during the transport

Case for 19" components (guide rails) or proprietary components (mounting plate)

To establish EMC-shielding, additional components need to be added to the enclosure

Front and rear side prepared for front panel mounting with collar screws and sleeves

Perforated bottom cover for air-cooling

No visible screws; cladding parts removable without tools

For board depth 160 mm, 220 mm, 280 mm and 340 mm (depending on case depth)

SPECIFICATIONS

- Product Type:** Case
- Type:** Case for Individual Electronic Components
- Product Family:** RatiopacPRO Style

Table 1/3

Catalog Number	Rack Height	Rack Width	Depth	Package Quantity	Usable Height	Usable Width
24580-310	3U	28HP	322mm	1	112.3mm	142.8mm

CatalogNumber	Rack Height	Rack Width	Depth	Package Quantity	Usable Height	Usable Width
24580-311	3U	28HP	382mm	1	112.3mm	142.8mm
24580-320	3U	42HP	322mm	1	112.3mm	213.9mm
24580-321	3U	42HP	382mm	1	112.3mm	213.9mm
24580-322	3U	42HP	442mm	1	112.3mm	213.9mm
24580-330	3U	63HP	322mm	1	112.3mm	320.6mm
24580-331	3U	63HP	382mm	1	112.3mm	320.6mm
24580-332	3U	63HP	442mm	1	112.3mm	320.6mm
24580-340	3U	84HP	322mm	1	112.3mm	427.3mm
24580-341	3U	84HP	382mm	1	112.3mm	427.3mm
24580-342	3U	84HP	442mm	1	112.3mm	427.3mm
24580-343	3U	84HP	502mm	1	112.3mm	427.3mm
24580-420	4U	42HP	322mm	1	156.8mm	213.9mm
24580-421	4U	42HP	382mm	1	156.8mm	213.9mm
24580-422	4U	42HP	442mm	1	156.8mm	213.9mm
24580-430	4U	63HP	322mm	1	156.8mm	320.6mm
24580-431	4U	63HP	382mm	1	156.8mm	320.6mm
24580-432	4U	63HP	442mm	1	156.8mm	320.6mm
24580-440	4U	84HP	322mm	1	156.8mm	427.3mm

CatalogNumber	Rack Height	Rack Width	Depth	Package Quantity	Usable Height	Usable Width
24580-441	4U	84HP	382mm	1	156.8mm	427.3mm
24580-442	4U	84HP	442mm	1	156.8mm	427.3mm
24580-443	4U	84HP	502mm	1	156.8mm	427.3mm

Table 2/3

Catalog Number	Front Frame Construction	Cooling Option	Complies With	EMC Shielding	Finish	Height
24580-310	Side Trim, Horizontal Rails	Yes	IEC 60297-3-101, IEC 60297-3-102, IEEE 1101.1, IEEE 1101.10, IEEE 1101.11	No (Retrofittable)	Anodized, Passivated, Powder Coated	157mm
24580-311	Side Trim, Horizontal Rails	Yes	IEC 60297-3-101, IEC 60297-3-102, IEEE 1101.1, IEEE 1101.10, IEEE 1101.11	No (Retrofittable)	Anodized, Passivated, Powder Coated	157mm
24580-320	Side Trim, Horizontal Rails	Yes	IEC 60297-3-101, IEC 60297-3-102, IEEE 1101.1, IEEE 1101.10, IEEE 1101.11	No (Retrofittable)	Anodized, Passivated, Powder Coated	157mm
24580-321	Side Trim, Horizontal Rails	Yes	IEC 60297-3-101, IEC 60297-3-102, IEEE 1101.1, IEEE 1101.10, IEEE 1101.11	No (Retrofittable)	Anodized, Passivated, Powder Coated	157mm
24580-322	Side Trim, Horizontal Rails	Yes	IEC 60297-3-101, IEC 60297-3-102, IEEE 1101.1, IEEE 1101.10, IEEE 1101.11	No (Retrofittable)	Anodized, Passivated, Powder Coated	157mm

CatalogNumber	Front Frame Construction	Cooling Option	Complies With	EMC Shielding	Finish	Height
24580-330	Side Trim, Horizontal Rails	Yes	IEC 60297-3-101, IEC 60297-3-102, IEEE 1101.1, IEEE 1101.10, IEEE 1101.11	No (Retrofittable)	Anodized, Passivated, Powder Coated	157mm
24580-331	Side Trim, Horizontal Rails	Yes	IEC 60297-3-101, IEC 60297-3-102, IEEE 1101.1, IEEE 1101.10, IEEE 1101.11	No (Retrofittable)	Anodized, Passivated, Powder Coated	157mm
24580-332	Side Trim, Horizontal Rails	Yes	IEC 60297-3-101, IEC 60297-3-102, IEEE 1101.1, IEEE 1101.10, IEEE 1101.11	No (Retrofittable)	Anodized, Passivated, Powder Coated	157mm
24580-340	Side Trim, Horizontal Rails	Yes	IEC 60297-3-101, IEC 60297-3-102, IEEE 1101.1, IEEE 1101.10, IEEE 1101.11	No (Retrofittable)	Anodized, Passivated, Powder Coated	157mm
24580-341	Side Trim, Horizontal Rails	Yes	IEC 60297-3-101, IEC 60297-3-102, IEEE 1101.1, IEEE 1101.10, IEEE 1101.11	No (Retrofittable)	Anodized, Passivated, Powder Coated	157mm
24580-342	Side Trim, Horizontal Rails	Yes	IEC 60297-3-101, IEC 60297-3-102, IEEE 1101.1, IEEE 1101.10, IEEE 1101.11	No (Retrofittable)	Anodized, Passivated, Powder Coated	157mm
24580-343	Side Trim, Horizontal Rails	Yes	IEC 60297-3-101, IEC 60297-3-102, IEEE 1101.1, IEEE 1101.10, IEEE 1101.11	No (Retrofittable)	Anodized, Passivated, Powder Coated	157mm

CatalogNumber	Front Frame Construction	Cooling Option	Complies With	EMC Shielding	Finish	Height
24580-420	Side Trim, Horizontal Rails	Yes	IEC 60297-3-101, IEC 60297-3-102, IEEE 1101.1, IEEE 1101.10, IEEE 1101.11	No (Retrofittable)	Anodized, Passivated, Powder Coated	201mm
24580-421	Side Trim, Horizontal Rails	Yes	IEC 60297-3-101, IEC 60297-3-102, IEEE 1101.1, IEEE 1101.10, IEEE 1101.11	No (Retrofittable)	Anodized, Passivated, Powder Coated	201mm
24580-422	Side Trim, Horizontal Rails	Yes	IEC 60297-3-101, IEC 60297-3-102, IEEE 1101.1, IEEE 1101.10, IEEE 1101.11	No (Retrofittable)	Anodized, Passivated, Powder Coated	201mm
24580-430	Side Trim, Horizontal Rails	Yes	IEC 60297-3-101, IEC 60297-3-102, IEEE 1101.1, IEEE 1101.10, IEEE 1101.11	No (Retrofittable)	Anodized, Passivated, Powder Coated	201mm
24580-431	Side Trim, Horizontal Rails	Yes	IEC 60297-3-101, IEC 60297-3-102, IEEE 1101.1, IEEE 1101.10, IEEE 1101.11	No (Retrofittable)	Anodized, Passivated, Powder Coated	201mm
24580-432	Side Trim, Horizontal Rails	Yes	IEC 60297-3-101, IEC 60297-3-102, IEEE 1101.1, IEEE 1101.10, IEEE 1101.11	No (Retrofittable)	Anodized, Passivated, Powder Coated	201mm
24580-440	Side Trim, Horizontal Rails	Yes	IEC 60297-3-101, IEC 60297-3-102, IEEE 1101.1, IEEE 1101.10, IEEE 1101.11	No (Retrofittable)	Anodized, Passivated, Powder Coated	201mm

CatalogNumber	Front Frame Construction	Cooling Option	Complies With	EMC Shielding	Finish	Height
24580-441	Side Trim, Horizontal Rails	Yes	IEC 60297-3-101, IEC 60297-3-102, IEEE 1101.1, IEEE 1101.10, IEEE 1101.11	No (Retrofittable)	Anodized, Passivated, Powder Coated	201mm
24580-442	Side Trim, Horizontal Rails	Yes	IEC 60297-3-101, IEC 60297-3-102, IEEE 1101.1, IEEE 1101.10, IEEE 1101.11	No (Retrofittable)	Anodized, Passivated, Powder Coated	201mm
24580-443	Side Trim, Horizontal Rails	Yes	IEC 60297-3-101, IEC 60297-3-102, IEEE 1101.1, IEEE 1101.10, IEEE 1101.11	No (Retrofittable)	Anodized, Passivated, Powder Coated	201mm

Table 3/3

Catalog Number	Material	Protection Rating	Static Load	Width	Quick Ship
24580-310	Aluminum	IP30	25kg	176.4mm	No
24580-311	Aluminum	IP30	25kg	176.4mm	No
24580-320	Aluminum	IP30	25kg	247.5mm	No
24580-321	Aluminum	IP30	25kg	247.5mm	No
24580-322	Aluminum	IP30	25kg	247.5mm	No
24580-330	Aluminum	IP30	25kg	354.2mm	No
24580-331	Aluminum	IP30	25kg	354.2mm	No
24580-332	Aluminum	IP30	25kg	354.2mm	No
24580-340	Aluminum	IP30	25kg	460.9mm	No
24580-341	Aluminum	IP30	25kg	460.9mm	No

Catalog Number	Material	Protection Rating	Static Load	Width	Quick Ship
24580-342	Aluminum	IP30	25kg	460.9mm	No
24580-343	Aluminum	IP30	25kg	460.9mm	No
24580-420	Aluminum	IP30	25kg	247.5mm	No
24580-421	Aluminum	IP30	25kg	247.5mm	No
24580-422	Aluminum	IP30	25kg	247.5mm	No
24580-430	Aluminum	IP30	25kg	354.2mm	No
24580-431	Aluminum	IP30	25kg	354.2mm	No
24580-432	Aluminum	IP30	25kg	354.2mm	No
24580-440	Aluminum	IP30	25kg	460.9mm	No
24580-441	Aluminum	IP30	25kg	460.9mm	No
24580-442	Aluminum	IP30	25kg	460.9mm	No
24580-443	Aluminum	IP30	25kg	460.9mm	No

ADDITIONAL PRODUCT DETAILS

For custom configurations (colors, sizes, etc.), please visit our online configurator (<https://configurators.schroff.biz/ratiopacpro-style>).

Modification service for customer specific versions on request (special colours, sizes, cut-outs, etc.).

Assembly service from lotsize 1.

WARNING

nVent products shall be installed and used only as indicated in nVent's product instruction sheets and training materials. Instruction sheets are available at www.nvent.com and from your nVent customer service representative. Improper installation, misuse, misapplication or other failure to completely follow nVent's instructions and warnings may cause product malfunction, property damage, serious bodily injury and death and/or void your warranty.

North America

All locations
+1.763.422.2661
Chat with us:
nvent.com/schroff

Europe

Straubenhardt, Germany
+49.7082.794.0
Betschdorf, France
+33.3.88.90.64.90
Warsaw, Poland
+48.22.209.98.35
Assago, Italy
+39.02.932.7141
Chat with us:
nvent.com/schroff

Asia

Shanghai, China
+86.21.2412.6943
Qingdao, China
+86.532.8771.6101
Singapore
+65.6768.5800
Shin-Yokohama, Japan
+81.45.476.0271
Chat with us:
nvent.com/schroff

Middle East & India

Dubai, United Arab Emirates
+971.4.378.1700
Bangalore, India
+91.80.6715.2001
Istanbul, Turkey
+90.216.250.7374
Chat with us:
nvent.com/schroff



Our powerful portfolio of brands:

CADDY ERICO HOFFMAN ILSCO SCHROFF TRACHTE