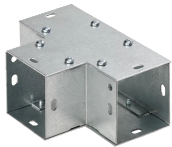


Flush Tee 90-Degree Lay-in Galvanized

Power Utilities



Lay-in Galvanized 90-Degree Flush Tees are used for flush mounting against a vertical or horizontal surface. Lay-in feature allows wires and cables can be laid in along wireway run. No pulling through of wires or cables prevents damage to insulation that often occurs in a pull-through wiring system.

FEATURES

Lay-in Galvanized 90-Degree Flush Tees are used for flush mounting against a vertical or horizontal surface

Lay-in feature allows wires and cables can be laid in along wireway run

No pulling through of wires or cables prevents damage to insulation that often occurs in a pull-through wiring system

SPECIFICATIONS

Finish: Galvanized

Color: Unpainted

Table 1/1

Catalog Number	Article Number	Type	Height	Width	Material	Thickness
F1212GTGV	89140	Tee	305 mm	305 mm	Mild Steel	1.9 mm
F88GTGV	89130	Tee	203 mm	203 mm	Mild Steel	1.9 mm
F22GTGV	89100	Tee	64 mm	64 mm	Mild Steel	1.52 mm
F44GTGV	89110	Tee	102 mm	102 mm	Mild Steel	1.52 mm

CatalogNumber	Article Number	Type	Height	Width	Material	Thickness
F66GTGV	89120	Tee	152 mm	152 mm	Mild Steel	1.52 mm
F1010GTGV	46880	Tee	254 mm	254 mm	Mild Steel	1.9 mm

WARNING

nVent products shall be installed and used only as indicated in nVent's product instruction sheets and training materials. Instruction sheets are available at www.nvent.com and from your nVent customer service representative. Improper installation, misuse, misapplication or other failure to completely follow nVent's instructions and warnings may cause product malfunction, property damage, serious bodily injury and death and/or void your warranty.



Our powerful portfolio of brands:

CADDY ERICO HOFFMAN ILSCO SCHROFF TRACHTE