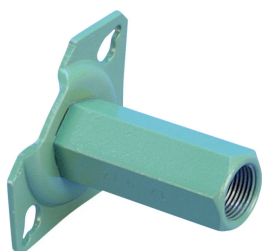


SA Coupler with Mounting Plate, Clipped Flange, Coated



Couplers with clipped flange mounting plates address concrete cover concerns. Coated reinforcing bar is used in place of plain reinforcing bars to protect against corrosion. nVent LENTON couplers are available in multiple coatings to meet specific job requirements. Typical applications include bridges, parking structures, pavement, marine structures and repair work.

FEATURES

Designed to splice the same diameter bars where the second bar can be rotated and is not restricted in its axial direction

Durable mounting plates allow for easy attachment to forms

Built-in thread cover or screw-in plug protects internal threads from concrete paste contamination

SPECIFICATIONS

Finish Standard:	ASTM® A775/A775M and AASHTO M284
Finish:	Epoxy Coated
Material:	Steel
100% U.S. Domestic Content:	Yes

Table 1/2

Catalog Number	Rebar Size, Metric	Rebar Size, US	Rebar Size, Canada	Hex Width (W)	Height (H)	Length (L)
EL12SAECF	12 mm	#4	10M	17 mm	57 mm	49mm
EL16SAECF	16 mm	#5	15M	22 mm	57 mm	64mm
EL20SAECF	20 mm	#6	20M	27 mm	57 mm	79mm
EL22SAECF	22 mm	#7		30 mm	57 mm	88mm

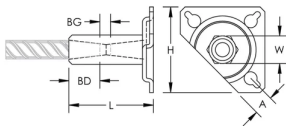
Table 2/2

Catalog Number	A	Bar Depth (BD)	Bar Gap (BG)	Unit Weight
EL12SAECF	13 mm	15mm	12mm	0.14 kg
EL16SAECF	13 mm	22mm	12mm	0.18 kg
EL20SAECF	18 mm	28mm	17mm	0.27 kg
EL22SAECF	18 mm	32mm	17mm	0.36 kg

Designed to Meet:

AASHTO;ABNT NBR 8548:1984;ACI 318 Type 1 (125% Specified Yield);ACI 318 Type 2 (Specified Tensile);ACI 349;ACI 359;AS3600

DIAGRAMS



WARNING

nVent products shall be installed and used only as indicated in nVent's product instruction sheets and training materials. Instruction sheets are available at www.nvent.com and from your nVent customer service representative. Improper installation, misuse, misapplication or other failure to completely follow nVent's instructions and warnings may cause product malfunction, property damage, serious bodily injury and death and/or void your warranty.

North America

+1.800.753.9221

Option 1 – Customer Care

Option 2 – Technical

Support

Europe

Netherlands:

+31 800-0200135

France:

+33 800 901 793

Europe

Germany:

800 1890272

Other Countries:

+31 13 5835404

APAC

Shanghai:

+ 86 21 2412 1618/19

Sydney:

+61 2 9751 8500



Our powerful portfolio of brands:

CADDY

ERICO

HOFFMAN

ILSCO

SCHROFF

TRACHTE