

# nVent LENTON Interlok Grommet



The nVent LENTON Grommet is used in conjunction with the nVent LENTON Bolted Form Mount and nVent LENTON Toggle Form Mount. These Grommets are used to secure nVent LENTON Interlok Grout-Fill Coupler variants in repeatable locations in the formwork. Once a Grout-Fill Coupler is placed over a Grommet, the Form Mount bolt is tightened, which expands the outside diameter of the Grommet, thus holding the Grout-Fill Coupler in place.

## FEATURES

Color-coded for the appropriate coupler size

Durable and reusable

## SPECIFICATIONS

**Material:** Polyester Urethane

Table 1/2

Catalog Number	Article Number	Diameter 1 (Ø1)	Diameter 2 (Ø2)	Length (L)	For Use With	Color
LK307A	145811	46 mm	19 mm	52mm	LK5, LK6, LK7	Blue
LK308A	145812	49 mm	19 mm	52mm	LK8	Red
LK316A		40 mm	19 mm	51mm	LK16	Black
LK320A		43 mm	19 mm	51mm	LK20	Yellow
LK309A	145813	52 mm	19 mm	52mm	LK9	Black
LK310A	145814	57 mm	19 mm	52mm	LK10	Yellow

CatalogNumber	Article Number	Diameter 1(Ø1)	Diameter 2(Ø2)	Length (L)	For Use With	Color
LK311A	145815	60 mm	19 mm	52mm	LK11	Blue
LK314A	145816	67 mm	19 mm	52mm	LK12, LK40, LKT14	Red
LK318A	145817	83 mm	19 mm	52mm	LKT18, LKT50	Black

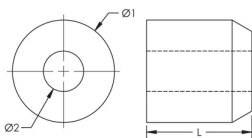
Table 2/2

Catalog Number	Article Number	Unit Weight
LK307A	145811	0.08 kg
LK308A	145812	0.09 kg
LK316A		0.12 kg
LK320A		0.15 kg
LK309A	145813	0.11 kg
LK310A	145814	0.13 kg
LK311A	145815	0.15 kg
LK314A	145816	0.22 kg
LK318A	145817	0.5 kg

## ADDITIONAL PRODUCT DETAILS

Prior to installation, please read and understand the detailed instructions and safety notices provided in the nVent LENTON Interlok Instruction Manual.

## DIAGRAMS



**WARNING**

nVent products shall be installed and used only as indicated in nVent's product instruction sheets and training materials. Instruction sheets are available at [www.nvent.com](http://www.nvent.com) and from your nVent customer service representative. Improper installation, misuse, misapplication or other failure to completely follow nVent's instructions and warnings may cause product malfunction, property damage, serious bodily injury and death and/or void your warranty.

**North America**

+1.800.753.9221  
Option 1 – Customer Care  
Option 2 – Technical  
Support

**Europe**

Netherlands:  
+31 800-0200135  
France:  
+33 800 901 793

**Europe**

Germany:  
800 1890272  
Other Countries:  
+31 13 5835404

**APAC**

Shanghai:  
+ 86 21 2412 1618/19  
Sydney:  
+61 2 9751 8500



Our powerful portfolio of brands:

**CADDY   ERICO   HOFFMAN   ILSCO   SCHROFF   TRACHTE**