

CPPW Tapered Plastic Screw-In Plug for A2



FEATURES

Designed for use with the A2 coupler families

Designed to keep dirt, water and concrete slurry out of the coupler during the concrete pour

Color coded for the appropriate coupler size

SPECIFICATIONS

Material: High Density Polyethylene (HDPE)

Table 1/2

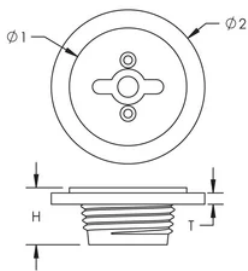
Catalog Number	Rebar Size, Metric	Rebar Size, US	Rebar Size, Canada	Diameter 1 (Ø1)	Diameter 2 (Ø2)	Height (H)
EL20CPPW	20 mm	#6	20M	27 mm	41 mm	13 mm
EL28CPPW	28 mm	#9	30M	37 mm	50 mm	16 mm
EL16CPPW	16 mm	#5	15M	22 mm	36 mm	13 mm
EL32CPPW	32 mm	#10		42 mm	54 mm	16 mm
EL22CPPW	22 mm	#7		33 mm	43 mm	16 mm
EL12CPPW	12 mm	#4	10M	17 mm	32 mm	13 mm

CatalogNumber	Rebar Size, Metric	Rebar Size, US	Rebar Size, Canada	Diameter 1(Ø1)	Diameter 2(Ø2)	Height (H)
EL25CPPW	25 mm	#8	25M	33 mm	46 mm	16 mm

Table 2/2

Catalog Number	Thickness (T)	Color	Package Quantity
EL20CPPW	3 mm	Yellow	25
EL28CPPW	3 mm	Black	25
EL16CPPW	3 mm	Black	25
EL32CPPW	3 mm	Yellow	25
EL22CPPW	3 mm	Blue	25
EL12CPPW	3 mm	Red	25
EL25CPPW	3 mm	Red	25

DIAGRAMS



WARNING

nVent products shall be installed and used only as indicated in nVent's product instruction sheets and training materials. Instruction sheets are available at www.nvent.com and from your nVent customer service representative. Improper installation, misuse, misapplication or other failure to completely follow nVent's instructions and warnings may cause product malfunction, property damage, serious bodily injury and death and/or void your warranty.

North America

+1.800.753.9221

Option 1 – Customer Care

Option 2 – Technical

Support

Europe

Netherlands:

+31 800-0200135

France:

+33 800 901 793

Europe

Germany:

800 1890272

Other Countries:

+31 13 5835404

APAC

Shanghai:

+ 86 21 2412 1618/19

Sydney:

+61 2 9751 8500



Our powerful portfolio of brands:

CADDY

ERICO

HOFFMAN

ILSCO

SCHROFF

TRACHTE