

CPPSW Tapered Plastic Screw-In Plug with Steel Cap for A2



FEATURES

Designed for use with the A2 coupler families

Designed to keep dirt, water and concrete slurry out of the coupler during the concrete pour

Steel cap provides added protection from damage

Color coded for the appropriate coupler size

SPECIFICATIONS

Material: High Density Polyethylene (HDPE)

Table 1/2

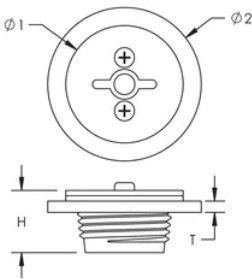
Catalog Number	Rebar Size, Metric	Rebar Size, US	Rebar Size, Canada	Diameter 1 (Ø1)	Diameter 2 (Ø2)	Height (H)
EL12CPPSW	12 mm	#4	10M	25 mm	32 mm	15 mm
EL16CPPSW	16 mm	#5	15M	30 mm	36 mm	15 mm
EL20CPPSW	20 mm	#6	20M	35 mm	41 mm	15 mm
EL22CPPSW	22 mm	#7		40 mm	43 mm	18 mm

CatalogNumber	Rebar Size, Metric	Rebar Size, US	Rebar Size, Canada	Diameter 1(Ø1)	Diameter 2(Ø2)	Height (H)
EL25CPPSW	25 mm	#8	25M	45 mm	46 mm	18 mm
EL28CPPSW	28 mm	#9	30M	50 mm	50 mm	18 mm
EL32CPPSW	32 mm	#10		55 mm	54 mm	18 mm

Table 2/2

Catalog Number	Thickness (T)	Color
EL12CPPSW	3 mm	Red
EL16CPPSW	3 mm	Black
EL20CPPSW	3 mm	Yellow
EL22CPPSW	3 mm	Blue
EL25CPPSW	3 mm	Red
EL28CPPSW	3 mm	Black
EL32CPPSW	3 mm	Yellow

DIAGRAMS



WARNING

nVent products shall be installed and used only as indicated in nVent's product instruction sheets and training materials. Instruction sheets are available at www.nvent.com and from your nVent customer service representative. Improper installation, misuse, misapplication or other failure to completely follow nVent's instructions and warnings may cause product malfunction, property damage, serious bodily injury and death and/or void your warranty.

North America

+1.800.753.9221

Option 1 – Customer Care

Option 2 – Technical

Support

Europe

Netherlands:

+31 800-0200135

France:

+33 800 901 793

Europe

Germany:

800 1890272

Other Countries:

+31 13 5835404

APAC

Shanghai:

+ 86 21 2412 1618/19

Sydney:

+61 2 9751 8500



Our powerful portfolio of brands:

CADDY

ERICO

HOFFMAN

ILSCO

SCHROFF

TRACHTE