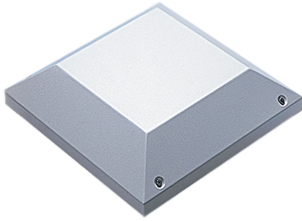


# ProLine High-Performance Pagoda Exhaust Vent



Vents fit on standard ProLine top with vent cutout or can be field-installed on any ProLine solid top. The Pagoda Vent features an integral centrifugal blower mounted in a housing that includes a drip-proof removable hood, wire mesh finger guard, perimeter gasket and terminal block. Electromagnetic-compatible (EMC) Pagoda Vents include a conductive screen, conductive gasket, line filter and 6-ft. power cord with stripped leads.

## FEATURES

---

Integral centrifugal blower mounted in a protective housing

Can be installed on any ProLine or ProLine G2 solid top

Drip-protected, raised cover is removable from the inside of the enclosure

Housing includes a drip-proof removable hood, wire mesh finger guard and perimeter gasket

Lead wire or power cord options

115V or 230V versions

Rated UL Type 1; installing this component on an enclosure brings the enclosure rating to UL Type 1

Installation hardware included



SPECIFICATIONS

**Thickness:** 1.52mm  
**Color:** Light Gray  
**Finish:** Powder Coated  
**Color Code:** RAL 7035

Table 1/1						
Catalog Number	Article Number	Material	Voltage AC	Hertz	Full Load	Quick Ship
PPTHP2	24379	Mild Steel	230V		0.9A	No
PPTHP2EMC	27689	Mild Steel	230V		0.9A	No
PPTHP1	24369	Mild Steel	115V	60Hz	1.7A	No
PPTHP1C	11096	Mild Steel	115V		1.7A	No
PPTHP1EMC	27679	Mild Steel	115V		1.7A	No

WARNING

nVent products shall be installed and used only as indicated in nVent's product instruction sheets and training materials. Instruction sheets are available at [www.nvent.com](http://www.nvent.com) and from your nVent customer service representative. Improper installation, misuse, misapplication or other failure to completely follow nVent's instructions and warnings may cause product malfunction, property damage, serious bodily injury and death and/or void your warranty.



Our powerful portfolio of brands:

CADDY   ERICO   HOFFMAN   ILSCO   SCHROFF   TRACHTE