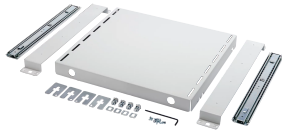


# ProLine G2 Frame Pull-Out Shelf



The ProLine G2 Frame Pull-Out Shelf mounts to the vertical hole pattern of the frame, with an integrated slide for easy access to shelf-mounted devices.

## FEATURES

---

Mounts to the front and rear frame uprights

The shelf is 16 gauge (1.5 mm) steel, while the mounting supports are 12 gauge (2.5mm) steel

White, polyester powder paint finish

SPECIFICATIONS

**Thickness:** 1.52mm  
**Color:** Light Gray  
**Finish:** Powder Coated  
**Color Code:** RAL 7035

Table 1/1						
Catalog Number	Article Number	Width	Material	Depth	Fits Frame Width	Pull Out
P2ASHFP6	33505	557mm	Mild Steel	505mm	600mm	450mm
P2ASHFP6EXT	33507	557mm	Mild Steel	705mm	600mm	670mm
P2ASHFP8	33506	757mm	Mild Steel	505mm	800mm	450mm
P2ASHFP8EXT	33508	757mm	Mild Steel	705mm	800mm	670mm

WARNING

nVent products shall be installed and used only as indicated in nVent's product instruction sheets and training materials. Instruction sheets are available at [www.nvent.com](http://www.nvent.com) and from your nVent customer service representative. Improper installation, misuse, misapplication or other failure to completely follow nVent's instructions and warnings may cause product malfunction, property damage, serious bodily injury and death and/or void your warranty.



Our powerful portfolio of brands:

CADDY   ERICO   HOFFMAN   ILSCO   SCHROFF   TRACHTE