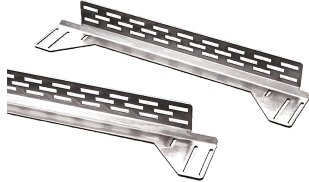


# ProLine G2 Adjustable Rack-Mounting Rails



ProLine G2 Adjustable Rack-Mounting Rails allow 19-in. Rack Angles to be positioned anywhere within the modular enclosure frame.

## FEATURES

---

Includes two right-hand and two left-hand mounting rails

12 gauge (2.5 mm) conductive steel

Mounting hardware is included

SPECIFICATIONS

Thickness: 2.66mm  
Finish: Plated

Table 1/1						
Catalog Number	Article Number	Height	Width	Depth	Material	Fits Frame Depth
P2GARA10	31885	73mm	97mm	909mm	Mild Steel	1000mm
P2GARA4	31893	73mm	97mm	309mm	Mild Steel	400mm
P2GARA5	31894	73mm	97mm	409mm	Mild Steel	500mm
P2GARA6	31895	73mm	97mm	509mm	Mild Steel	600mm
P2GARA7	31896				Mild Steel	
P2GARA8	31897	73mm	97mm	709mm	Mild Steel	800mm
P2GARA9	31898				Mild Steel	

WARNING

nVent products shall be installed and used only as indicated in nVent's product instruction sheets and training materials. Instruction sheets are available at [www.nvent.com](http://www.nvent.com) and from your nVent customer service representative. Improper installation, misuse, misapplication or other failure to completely follow nVent's instructions and warnings may cause product malfunction, property damage, serious bodily injury and death and/or void your warranty.



Our powerful portfolio of brands:

CADDY   ERICO   HOFFMAN   ILSCO   SCHROFF   TRACHTE