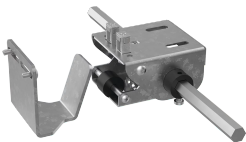


ProLine G2 Mechanical Interlock, Primary Door Kit

CATALOG NUMBER

P2AMIP



The Mechanical Interlock solution and associated components have been redesigned to simplify installation and increase operator safety. The solution is based around a ½-in (~13 mm) Aluminum Hex Rod, which feeds through door actuators positioned only at the top of the enclosure(s). The door-mounted activator brackets engage with the actuator(s), also installed in series is a hook and capture system: the combination of actuator and hook increases safety by preventing system re-energization without closure of all secondary doors and the primary door.

The components can be combined to safely interlock any number of enclosure configurations, including applications where a rear door or series of doors are present. Note that interlock components will work with all door options (solid single, overlapping double, window, and disconnect), mounting on the upper door bar near the center to provide maximum security.

FEATURES

Solution based around a ½-in (~13 mm) Aluminum Hex Rod

Consult installation instructions to determine which components would be required to safely interlock a defined solution.

PRODUCT ATTRIBUTES

Article Number: 35972

Material: Mild Steel

Finish: Plated

Type: Primary Door Kit

ADDITIONAL PRODUCT DETAILS

Note that interlock components will work with all door options (solid single, overlapping double, window, and disconnect), mounting on the upper door bar near the center to provide maximum security. Consult installation instructions to determine

which components would be required to safely interlock a defined solution.

WARNING

nVent products shall be installed and used only as indicated in nVent's product instruction sheets and training materials. Instruction sheets are available at www.nvent.com and from your nVent customer service representative. Improper installation, misuse, misapplication or other failure to completely follow nVent's instructions and warnings may cause product malfunction, property damage, serious bodily injury and death and/or void your warranty.



Our powerful portfolio of brands:

CADDY ERICO HOFFMAN ILSCO SCHROFF TRACHTE