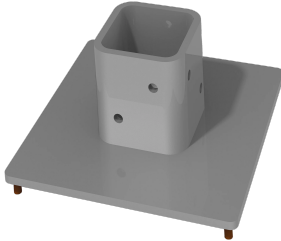


Compact Series 4 Adapter Plate



Compact Series 4 Adapter Plate is attached to the Flex Base to allow connection with the CS4 tube.

FEATURES

Assembled Compact Series 4 system has a max weight load of 337 lb. (153.2 kg)

SPECIFICATIONS

Table 1/1						
Catalog Number	Article Number	Height	Width	Depth	Material	Finish
S2MSC4APG	59358	242mm	242mm	124mm	Aluminum	Powder Coated

WARNING

nVent products shall be installed and used only as indicated in nVent's product instruction sheets and training materials. Instruction sheets are available at www.nvent.com and from your nVent customer service representative. Improper installation, misuse, misapplication or other failure to completely follow nVent's instructions and warnings may cause product malfunction, property damage, serious bodily injury and death and/or void your warranty.



Our powerful portfolio of brands:

CADDY ERICO HOFFMAN ILSCO SCHROFF TRACHTE