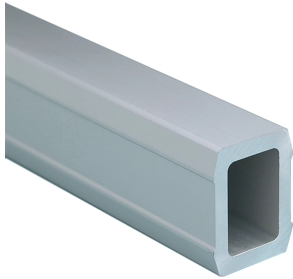


Compact Series 2 Tube



Compact Series 2 Tube provides structural integrity and acts as conduit for equipment wiring.

FEATURES

Hollow aluminum extrusion available in various lengths

Connection components fastened to support arm with set screws

Assembled Compact Series 2 HMI Arm System has a max weight load of 101 lb. (45.8 kg)

SPECIFICATIONS

Material: Aluminum
Finish: Anodized

Table 1/1						
Catalog Number	Article Number	Height	Width	Depth	Thickness	Length
CCS2T10	66580	1000mm	45mm	60mm	8mm	1000mm
CCS2T20	66590	1500mm	45mm	60mm	8mm	1500mm
CCS2T5	66290	500mm	45mm	60mm	8mm	500mm

WARNING

nVent products shall be installed and used only as indicated in nVent's product instruction sheets and training materials. Instruction sheets are available at www.nvent.com and from your nVent customer service representative. Improper installation, misuse, misapplication or other failure to completely follow nVent's instructions and warnings may cause product malfunction, property damage, serious bodily injury and death and/or void your warranty.



Our powerful portfolio of brands:

CADDY ERICO HOFFMAN ILSCO SCHROFF TRACHTE